

A LIFE-CHANGING EDUCATION



UNIVERSITY OF  
LINCOLN  
UNITED KINGDOM

INTERNATIONAL PROSPECTUS



# Welcome to Lincoln



## Top 10

The University of Lincoln is a top 10 modern university, according to *The Times* and *Sunday Times Good University Guide 2015*

## Contents

3	Welcome
5	A Great Place to Study
6	Our Courses
9	Live in the Heart of the UK
11	A Home from Home
17	The City of Lincoln
21	Our Award-winning Campus and Facilities
23	A Supportive Community
25	Develop Your English Language Skills
27	The Students' Union
29	Your Future Career
31	University of Lincoln Alumni
33	World-leading Research
37	Visit Us
39	Financial Support at Lincoln
41	Apply to Lincoln
42	Great Reasons to Discover Lincoln



## A Warm Welcome

We are delighted that you are considering joining our academic community here at the University of Lincoln.

At Lincoln, our expert staff, world-class research and excellent facilities combine to create a collaborative learning environment that is challenging, engaging and academically rigorous. Our strong partnerships with employers provide opportunities for students to engage with industry and prepare for their future career.

Based in one of the world's great small cities, in the heart of the United Kingdom, our award-winning modern campus has the facilities and services to support you in your studies.

I look forward to welcoming you to Lincoln.

**Professor Mary Stuart**  
Vice Chancellor  
University of Lincoln



# A Great Place to Study

## The Lincoln Experience

Lincoln is highly regarded for its innovative Student as Producer approach to teaching, learning and engagement, and has been rated among the UK's top ten modern universities by *The Times and Sunday Times Good University Guide 2015*.

### Historic Location

Lincoln Castle is home to one of only four surviving copies of the Magna Carta, signed in 1215. 2015 marked the 800th anniversary of the signing, with events and celebrations held across the city.

Our hands-on approach includes real-world scenarios that enable you to develop transferable skills and work collaboratively with staff and fellow students to generate ideas and solve problems creatively.

Whichever course you choose to study, you will benefit from access to cutting-edge technology, a variety of innovative teaching methods and the University's commitment to digital education. As your studies progress, you will be able to influence the direction of your own learning and pursue topics that particularly interest you or that match your career aspirations.

The Lincoln experience prepares students for successful careers around the world and nine out of ten of our most recent graduates were in work or further study within six months of finishing their course.

### Engage in Research

At Lincoln, you can be part of innovative research projects that are changing the world. There are opportunities to work alongside world-renowned academics on research that makes a difference to society.

### Get Involved

There are numerous opportunities to engage with the work of the University, from getting involved in the recruitment of new staff and shadowing senior managers, to providing feedback on support services and representing the opinions of your fellow students. The student voice influences the direction and development of the University at every level.

### Develop Yourself

University is about more than gaining an academic qualification. At Lincoln, you will broaden your horizons, meet people from across the globe and from all walks of life, and develop initiative and independence. The Lincoln experience ensures that when you graduate, you are equipped with the confidence, skills and knowledge you need to make a positive difference to society and achieve the future you want.

### Studying in the UK

A long-established reputation for teaching and research excellence across a broad range of subjects makes the UK a popular choice for students from around the world. Studying for a qualification in the UK allows you to develop your English language skills and experience a culture with a rich history.

### Arriving in the UK

The University of Lincoln offers a free airport pick-up service on specific dates throughout the year. Please visit our website for more information [www.lincoln.ac.uk/international](http://www.lincoln.ac.uk/international)

### Further Information

If you have any questions about the University of Lincoln, your application or studying in the UK, you can contact us by telephone or email.

### International Office

Telephone:  
+44 (0)1522 886040  
Email: [international@lincoln.ac.uk](mailto:international@lincoln.ac.uk)

# Our Courses

## Undergraduate

Accountancy and Finance  
Advertising and Marketing  
Animal Behaviour and Welfare  
Animation  
Architecture  
Audio Production  
Biochemistry  
Biology  
Biomedical Science  
Bioveterinary Science  
Business and Finance  
Business and Management  
Business and Marketing  
Business Studies  
Chemistry  
Computer Information Systems  
Computer Science  
Conservation and Restoration  
Creative Advertising  
Criminology  
Criminology and Social Policy  
Dance  
Design for Exhibition and Museums  
Drama  
Drama and English  
Economics\*\*  
Electrical Engineering  
English  
English and History  
English and Journalism  
Events Management  
Fashion  
Film and Television  
Fine Art

Food Manufacture  
(Operations Management) Part-time  
Food Manufacture (Quality Assurance and Technical Management) Part-time  
Forensic Chemistry  
Forensic Science  
Games Computing  
Graphic Design  
Health and Social Care  
History  
Illustration  
Interactive Design  
Interior Architecture and Design  
International Business Management  
International Relations  
International Relations and Politics  
International Relations and Social Policy  
International Tourism Management  
Journalism  
Journalism (Investigative)  
Journalism and Public Relations  
Law  
Law and Criminology  
Marketing  
Mathematics  
Mathematics and Computer Science  
Mathematics and Physics  
Mechanical Engineering  
Media Production  
Music  
Nursing  
Nursing (Mental Health)  
Pharmaceutical Science  
Pharmacy

Photography  
Physical Activity and Health Development  
Physical Education and Sport\*\*  
Physics  
Politics  
Politics and Social Policy  
Product Design  
Psychology  
Psychology with Clinical Psychology  
Psychology with Forensic Psychology  
Public Relations  
Social Computing  
Social Policy  
Social Work  
Sociology  
Sport and Exercise Science  
Sport Development and Coaching  
Strength and Conditioning in Sport\*\*  
Zoology

## Postgraduate Taught

21st Century Literature  
Accounting  
Accounting and Finance  
Advanced Clinical Practice  
Applied Mathematics  
Architecture  
Arts Journalism  
Audio Production  
Biotechnology  
Business Analytics  
Choreography  
Clinical Animal Behaviour  
Community Radio  
Computational Physics  
Computer Science\*  
Conservation of Historic Objects  
Conservation Studies  
Contemporary Curatorial Practice  
Creative Writing  
Crisis and Disaster Management  
Culture and Heritage Management  
Design  
Design for Exhibition and Museums  
Developmental Psychology  
Digital Media  
Digital Journalism  
Drama  
Education  
Educational Research and Development  
Engineering Management  
English Studies  
Events Management\*  
Festivals and Events Production  
Finance  
Finance with Banking and Investment  
Fine Art  
Forensic Anthropology  
Forensic Psychology  
Forensic Science  
Globalising Justice  
Governance  
Graphic Design  
Historical Studies  
Human Resource Development  
Human Resource Management  
Interior Architecture and Design  
International Business\*  
International Business Economics  
International Business Law

International Design Enterprise  
International Law  
International Tourism Management  
Journalism  
Journalism, War and International Human Rights  
Logistics Management  
Management\*  
Marketing\*  
Marketing with Luxury Branding  
MBA\*  
Mechanical Engineering  
Media and Cultural Studies  
Media, Film and TV Production  
Medieval Studies  
Nineteenth Century Studies  
Pharmacy and Pharmaceutical Science  
Photography  
Postgraduate Certificate in Education (Secondary) – PGCE  
Project Management  
Psychology  
Public Relations  
Pure Mathematics  
Science and Environmental Journalism  
Social Research  
Social Work  
Sport Coaching  
Sport Development  
Sport and Exercise Science  
Sports Journalism  
Sport and Physical Education  
Sport Science  
Studies in Media and Culture  
Tourism and Marketing

## Postgraduate Research

Animal Behaviour and Welfare  
Art & Design  
Biochemistry and Molecular Biology  
Biology  
Biomedical and Medical Science  
Chemistry  
Clinical Research (Health and Social Care)  
Computational Physics  
Computer Science  
Conservation Science  
Criminology  
Educational Research and Development  
Engineering  
Evolution and Ecology  
Food Manufacturing and Technology  
Forensic Science  
Health and Social Care  
History  
International Relations  
Law  
Microbiology  
Molecular Biology  
Performing Arts  
Pharmacy and Pharmaceutical Science  
Politics  
Psychology  
Pure Mathematics  
Social Policy  
Social Sciences  
Sport and Exercise Science  
Zoology.

\*January/February start dates also available.

\*\*Subject to validation.

For the most up-to-date information on all our courses, please visit [www.lincoln.ac.uk](http://www.lincoln.ac.uk)



Live in the  
Heart of the UK

## A Great Location

Situated in the heart of the UK – with its vibrant and historic setting – Lincoln is a great place to live and to study.

With good transport links within easy access of the city centre and the University campus, you can easily visit other cities and tourist destinations throughout your time here.

### Rail

Lincoln has quick and regular rail links to many major cities across the country. Leicester, Nottingham, Sheffield, Hull and Leeds are just a short journey away, and you can be at London's King's Cross station in around two hours.

### Air

Lincoln's central location means you benefit from easy access to a wide range of domestic and international airports. Our nearest airports are Robin Hood Airport in Doncaster, East Midlands Airport in Nottinghamshire, and Leeds Bradford Airport in Leeds.



# A Home from Home

## A Great Place to Live

The University of Lincoln's Brayford Pool Campus is based in the heart of the city and all accommodation is located either on campus or a short walking distance away. The University offers a wide choice of rooms in modern self-catered apartments.



A range of accommodation options available to suit your budget and preferences.

Choosing where to live while studying is a big decision, so it is important to find out what's available. Whatever you decide, the University of Lincoln will assist you to find accommodation should you require it.

### The Student Village – Lincoln Courts

Lincoln Courts is a stunning waterfront accommodation complex, situated on campus in the heart of the Student Village. You will be close to the University's academic buildings, Student Services Team and the Students' Union, and the city centre is just a short walk away. Lincoln Courts is owned and managed by the University of Lincoln, and offers a great student experience.

The complex is made up of 17 contemporary buildings of self-catered apartments, which each house five to eight students. In total there are 1,037 furnished student bedrooms. Some apartments have rooms designed specifically for students with disabilities.

Fees for apartments in Lincoln Courts include both heating and electricity bills, personal possessions insurance and University WiFi access.

### What's Available?

Each apartment has fully fitted kitchen/dining facilities with a cooker, fridge, microwave, kettle, iron, ironing board, vacuum cleaner and mop and bucket. All rooms are fully furnished.

Standard room: Every room is furnished with a bed, wardrobe, desk and drawers. Free 24-hour WiFi access to the University broadband network is also available.

En-suite room: In addition to the facilities that come with a standard room, these rooms have en-suite bathrooms which include a shower, basin and toilet.

### Visit the Campus

You can view the University's accommodation if you visit us on an Open Day. See [www.lincoln.ac.uk/opendays](http://www.lincoln.ac.uk/opendays) for details. You can take a tour of our campus online at [www.lincoln.ac.uk/vod](http://www.lincoln.ac.uk/vod)

### Further Information Residential Services

Telephone:  
+44 (0)1522 886231 /  
886195

Email: [accommodation@lincoln.ac.uk](mailto:accommodation@lincoln.ac.uk)

### Facilities

- En-suite rooms are available
- Fully fitted kitchen
- Disabled access
- Launderette facilities
- 24 hour on-campus security
- Bicycle storage
- Free internet, including WiFi coverage throughout, plus direct port access in rooms.

### How to Apply

Applying for accommodation at the University of Lincoln is simple. Once you have confirmed your course with UCAS (or with the University if you applied directly), you are able to make your application using the online accommodation system at [www.lincoln.ac.uk/accommodation](http://www.lincoln.ac.uk/accommodation). The application system opens from 1 March each year.

Lincoln Courts, the University's on-campus accommodation.



The Gateway is a brand new development located two minutes' from the main campus.

## University Accommodation Agency

The University Accommodation Agency (UAA) manages a number of properties in the city centre. Locations are generally 5 minutes' walk (up to 25 minutes' walk) from the University campus. Accommodation includes rooms with en-suite or shared facilities to suit a range of budgets.

### The Gateway

The Gateway is a brand new development in Lincoln that provides 519 rooms ranging from en-suite bedrooms in cluster flats to studio apartments. Each studio apartment contains its own kitchen, sleeping area and en-suite bathroom. The cluster flats comprise six en-suite bedrooms with a communal kitchen. It is situated just a couple of minutes away from the University and five minutes' walk from the city centre.

### St Mark' House

St Mark's House is situated within two minutes' walk from the main campus. This development offers studio, twin and en-suite shared apartments for undergraduate, postgraduate and international students.

### Saul House

Saul House is a student development in the heart of the city, designed exclusively for the University's postgraduate, mature and international students. 69 fully fitted rooms are available within 23 cluster flats of three bedrooms. Each flat contains a fully equipped kitchen, living area and en-suite bathroom. Saul House is located just a couple of minutes away from the University and five minutes' walk from the city centre.

The UAA has other smaller properties in various locations in the city centre. For further information on all of the UAA properties please visit our website [www.lincoln.ac.uk/accommodationagency](http://www.lincoln.ac.uk/accommodationagency)

## University Partnership Halls

These developments are located off campus but adjacent to the University and are within five minutes' walk from the main Brayford Pool Campus.

### Brayford Quay

Located opposite the University and overlooking the marina, Brayford Quay provides 402 en-suite rooms ranging from five or six-bedroom flats to self-contained studios. The flats include a TV and sofa in the kitchen/communal area, en-suite facilities and have broadband internet throughout. On-site facilities include a common room with a games area, small gym and launderette.

### Hayes Wharf

Hayes Wharf is a purpose-built student residence overlooking the Brayford Pool Campus. Its 224 en-suite bedrooms are split into shared apartments of two to five bedrooms. Facilities include Freeview television in every apartment with a free TV licence. Possessions insurance and fibre optic broadband connection are included and there are laundry facilities on site.

**Further Information**  
Residential Services  
Telephone:  
+44 (0)1522 886231/  
886195  
Email: [accommodation@lincoln.ac.uk](mailto:accommodation@lincoln.ac.uk)



Wherever you choose to live, our Residential Services Team can help you to find a safe, well-managed place to stay.

### The Junxion

Located in the city centre, just opposite the University Library and the Engine Shed, The Junxion offers 569 en-suite bedrooms in four, five or six-bedroom apartments with fully fitted kitchens, dining and lounge areas. Designed around a central courtyard, facilities include a lounge, launderette and cash machines. All apartments have a leather sofa, dishwasher, 32" LCD television, free TV licence and Freeview. Sky Sports is available in the common room. Contents insurance and broadband internet in all bedrooms is included.

### Park Court

Conveniently located close to the Brayford Pool Campus and a two-minute walk to the city centre, Park Court is a purpose-built development offering 289 en-suite study bedrooms in four and five-bedroom apartments with shared kitchens. Facilities include an on-site laundry, a lounge with 50" plasma TV, Freeview and DVD player, a pool table, games machines and vending machines.

### The Pavilions

The Pavilions is adjacent to the University's Sports and Recreation Centre. Accommodation comprises 1,329 en-suite bedrooms ranging from self-contained studio flats to six-bedroom apartments, which include dishwashers and 32" LCD televisions with Freeview. On-site facilities include a fully staffed accommodation office, shop and launderette. A fibre optic broadband connection is included in all bedrooms.

## University Associate Halls

These developments are located off campus but are within 5 to 15 minutes' walk from the University and city centre.

### Aqua House

Aqua House is situated less than half a mile from the city centre and the Brayford Pool Campus. The building consists of 75 study bedrooms with television and telephone/wireless internet access. Bathrooms, kitchens with dishwashers and laundry facilities are shared.

### Brayford Court

This purpose-built development of 22 apartments, each with three or six bedrooms, is only a few minutes' walk from the Brayford Pool Campus. Each kitchen is fully equipped and includes crockery and cutlery. Bedrooms have wireless internet access.

### Cathedral Street Apartments

This development of 94 bedrooms comprises 24 apartments with two to six bedrooms, with shared kitchens, shower rooms and washing machines. In each apartment lounge there is Freeview television. A TV licence, possessions insurance and wireless internet are included.

"Lincoln is a very safe and lovely city. I'm enjoying it a lot and not missing home. Everyone has been so helpful and friendly."  
*Evan, Beijing*

## College Mews

Located close to the Brayford Pool Campus, College Mews has 25 en-suite study bedrooms with shared kitchens plus on-site laundry facilities. Some rooms have original exposed brickwork and pillars. Free broadband internet is included.

## Danesgate House

Danesgate House is located in the Cathedral Quarter of the city centre and comprises shared flats and studios. All rooms have WiFi, en-suite shower rooms, and a flatscreen TV is located in the kitchen/lounge area of each flat. There is bike storage and an on-site laundry. Danesgate House has a secure door entry system, CCTV security and an on-site team.

## Hayes House

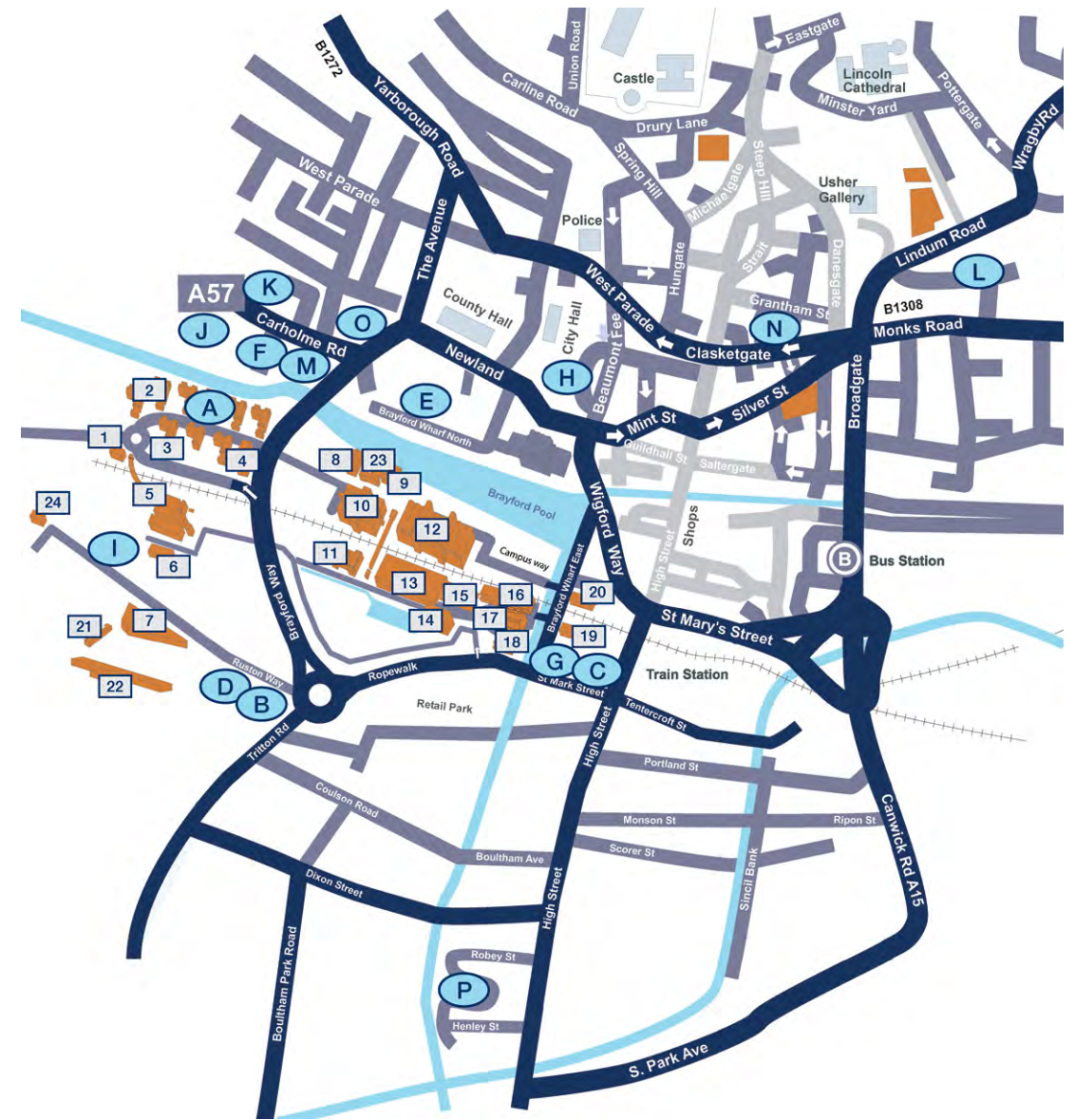
Hayes House is five minutes' walk from the main Brayford Pool Campus. The 39 en-suite study bedrooms with wireless broadband have double-glazed windows and shared kitchen facilities with dishwasher and cable TV plus on-site laundry facilities.

## Park View

Park View provides accommodation for Nursing students. Situated within 20 minutes' walk of the Brayford Pool Campus, it offers 52 rooms, some en-suite.

## Further Information Residential Services

Telephone:  
+44 (0)1522 886231 / 886195  
Email: accommodation@lincoln.ac.uk



## The Student Village

A Lincoln Courts

## University Accommodation Agency

B The Gateway  
C St Mark's House  
D Saul House

## University Partnership Halls

E Brayford Quay  
F Hayes Wharf

G The Junxion

H Park Court

I The Pavilions

## University Associate Halls

J Aqua House  
K Brayford Court  
L Cathedral Street Apts  
M College Mews  
N Danesgate House  
O Hayes House  
P Park View

## Brayford Pool Campus

1 Accommodation Office  
2 Student Village  
3 Village Hall  
4 Bridge House  
5 Sports and Recreation Centre  
6 Witham House  
7 Think Tank  
8 Student Wellbeing Centre  
9 EMMTEC  
10 Media, Humanities & Technology Building  
11 Science Centre  
12 Minerva Building

13 Art, Architecture & Design Building

14 Engineering Hub

15 Lincoln Performing Arts Centre

16 Students' Union

17 Library

18 Enterprise Building

19 David Chiddick Building

20 Witham Wharf

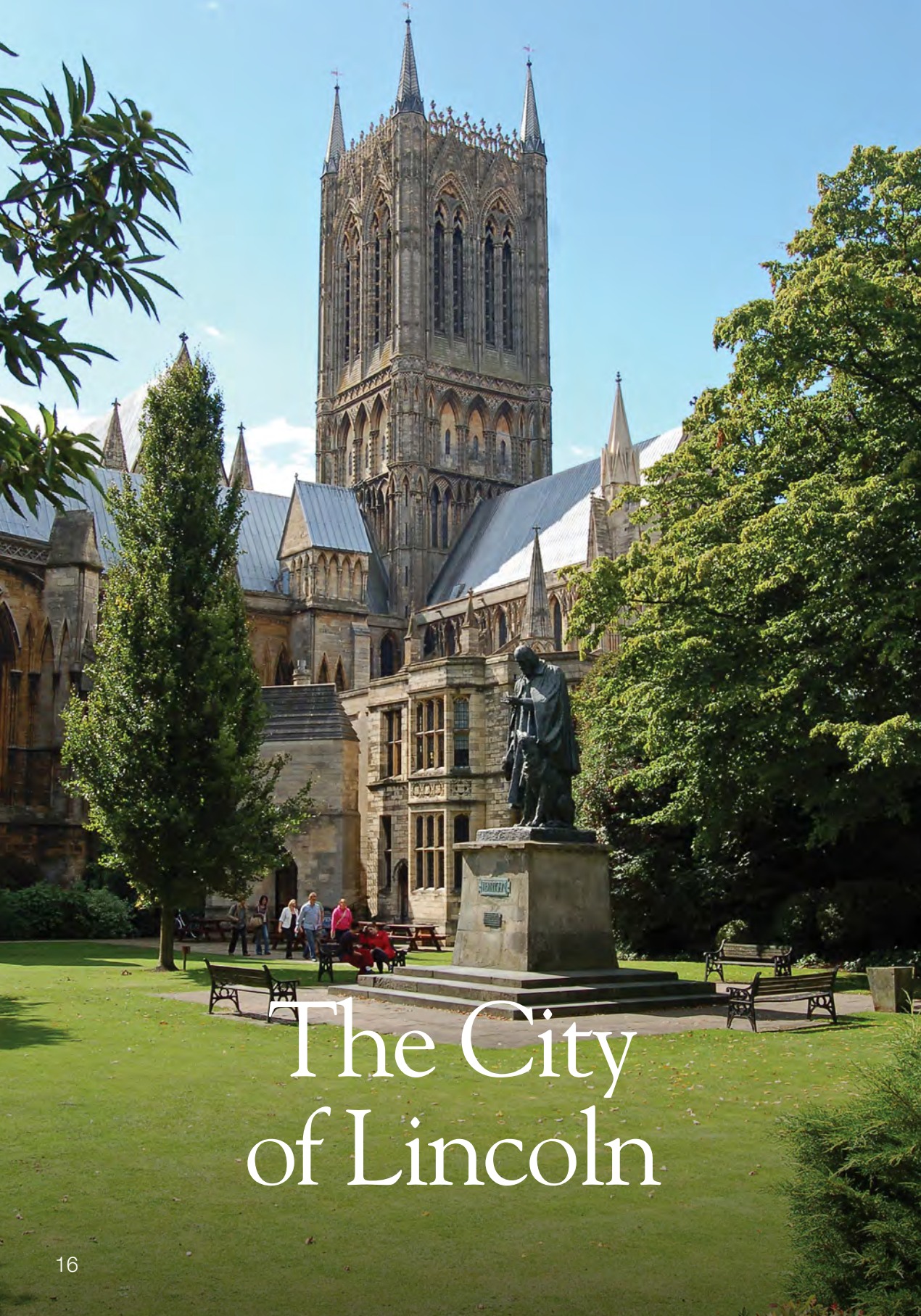
21 Minster House

22 Joseph Banks Laboratories

23 The Swan

24 Charlotte Scott Building





# The City of Lincoln

## Discover Lincoln

Historic and dynamic, Lincoln is one of the world's great small cities, renowned for its striking fusion of old and new.



Lincoln's Steep Hill, which leads to the city's Cathedral Quarter, has been voted Britain's Best Street.



The cathedral dominates the skyline above Lincoln's waterfront attractions.

### Discover Lincoln

Find out about more places to visit in Lincoln at:  
[www.visitlincoln.com](http://www.visitlincoln.com)  
[www.lincolncathedral.com](http://www.lincolncathedral.com)

### History and Heritage

Lincoln Cathedral overlooks the city and is celebrated as one of the finest medieval landmarks in Europe. Together with Lincoln Castle and the cobbled Bailgate, it is a reminder of the city's long and fascinating history.

Lincoln Castle houses one of only four surviving original copies of the Magna Carta, which was signed in 1215. You can enjoy a walk around the castle grounds, take to the river for a boat tour or get spooked on a ghost walk around the Cathedral Quarter.

### Arts and Culture

Lincoln offers a rich and diverse arts scene, with public art galleries and studios across the city. These include the Usher Gallery and the Sam Scorer Gallery, as well as the University's own exhibition area.

The city has a number of museums, including the Museum of Lincolnshire Life, RAF Scampton Museum and The Collection: Art and Archaeology in Lincolnshire, which tells the story of the region's heritage with displays from the Stone Age through to the Roman and Viking periods.

A number of festivals are held in the city throughout the year, celebrating a wide variety of interests, including the Steampunk Festival, the biennial Frequency Festival, Lincoln Book Festival, and the Lincolnshire International Chamber Music Festival.

### Stage and Screen

Film enthusiasts can watch the latest blockbusters at the nine-screen Odeon cinema or the independent Ritz Cinema, while the Lincoln Film Society offers a more avant-garde programme.

If you enjoy going to the theatre, the Theatre Royal and Lincoln Drill Hall offer a programme of national and local productions throughout the year. The Lincoln Performing Arts Centre is situated on campus and hosts comedy, dance, drama and music performances from national touring companies and our own student company. The Engine Shed, which is also located on campus, hosts live music, comedy, club nights and student balls, attracting some of the biggest names in entertainment.

Find out what's on at the Engine Shed and the Lincoln Performing Arts Centre at [www.engineshed.co.uk](http://www.engineshed.co.uk) and [www.lpac.co.uk](http://www.lpac.co.uk)

## Discover Lincoln



Lincoln has a mix of well-known high street brands, department stores and independent shops.



Crowds gather to watch the annual Lincoln Grand Prix Cycle Race.

### Great Entertainment

Acts who have performed at the Engine Shed and Lincoln Performing Arts Centre include:

Alan Carr  
Ben Howard  
Chase and Status  
Chris Ramsey  
Deaf Havana  
Dylan Moran  
Fatboy Slim  
Florence and the Machine  
Frank Turner  
Jake Bugg  
Jason Manford  
Kings of Leon  
Lee Evans  
Manic Street Preachers  
Micky Flanagan  
Miles Kane  
Milton Jones  
Pixie Lott  
Professor Green  
Rizzle Kicks  
Russell Howard  
Sarah Millican  
The Cribs  
30 Seconds to Mars.

### Going Out

As well as the Engine Shed, with its student club nights, comedy and live music, there are other Students' Union venues on campus. At the Tower Bars, you can watch live sport screenings, play pool and enjoy hot food.

### Shopping and Eating Out

Lincoln offers a great shopping experience with well-known high street names, as well as boutiques and specialist shops in the cobbled streets of the Bailgate. Craft fairs, farmers' markets and Lincoln's world-famous Christmas Market offer local foods, handmade crafts and unique gifts.

From popular chains such as Starbucks, Subway, Wagamama, Prezzo, Carluccio's and Nando's to independent restaurants offering Italian, Indian, Chinese, Thai, tapas and traditional English food, you are spoilt for choice when eating out in Lincoln.

### Sports and Leisure

Lincolnshire is a great county for enjoying outdoor activities and sports. The landscape is perfect for walking, cycling, horse riding, fishing and water sports.

The city caters for a range of sporting needs with various fitness and leisure centres, swimming pools, parks and local sporting clubs. Lincoln also hosts an annual Grand Prix cycle race.

The University has its own Sports and Recreation Centre where you have access to our extensive fitness facilities, including five-a-side football pitches, squash courts and a well-equipped gym. The Students' Union organises more than 120 sports teams, clubs and societies. Find out more on page 27.

### The Coast

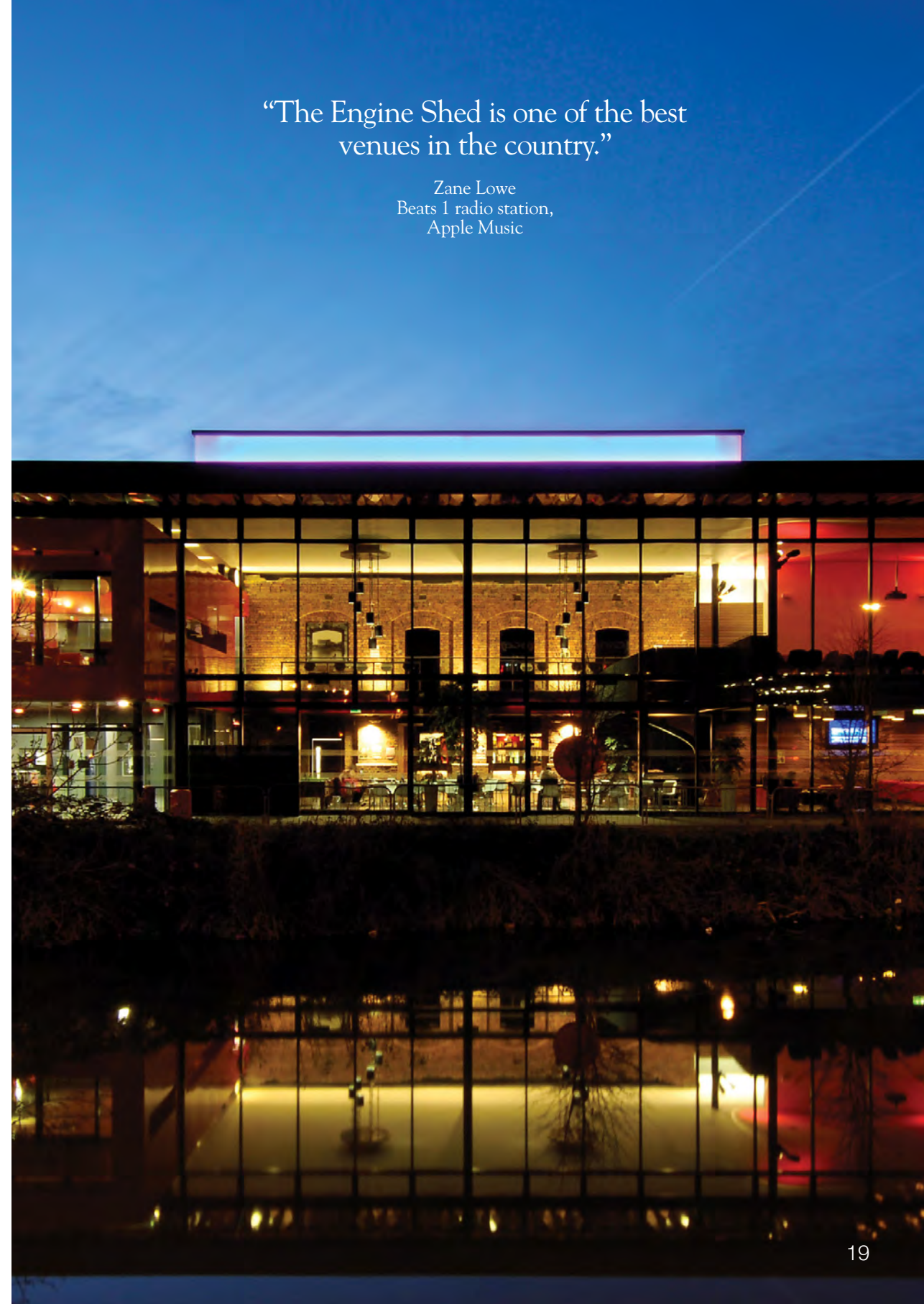
The Lincolnshire coastline is a remarkable area and home to some of Britain's best seaside resorts and Blue Flag beaches. Take a trip to the coast; it's perfect for kitesurfing, sandcastle building or simply walking along the dunes.

### Location

Lincoln is within easy reach of London, Leicester, Hull, Nottingham, Sheffield and Leeds, with good rail and road links. London's King's Cross station is less than two hours away by train. Lincoln's central location allows for quick and easy access to a number of airports for domestic, European and international flights.

"The Engine Shed is one of the best venues in the country."

Zane Lowe  
Beats 1 radio station,  
Apple Music



# Our Award-winning Campus and Facilities



## Award-winning Campus

The University of Lincoln's award-winning city centre campus provides a modern student-centred environment. Based on the picturesque Brayford Pool marina, everything you need is either on campus or just a short walk away.

### Investing in our Campus

The University has announced new investment worth £130 million to further enhance its campus and facilities.

At Lincoln, we constantly invest in our campus to provide the best learning environment for our undergraduates. Whether you are a creative student who requires the right space and light to fully explore and challenge your discipline, or a science student who needs access to the very latest equipment and resources, the University has ensured that you have everything you need to develop the skills employers are looking for.

### Specialist Facilities

Our Brayford Pool Campus has facilities designed for the subject-specific needs of our students. Editing and recording suites, industry-standard production facilities, modern studios and well-equipped workshops are available for those studying arts-based subjects, while students in engineering and computing have access to laboratories, workshops and the latest equipment and technology. There are modern and innovative learning spaces across the campus for group work and exchanging ideas with other students.

Science students have access to the latest equipment and cutting-edge laboratories at our world-class Science and Innovation Park, which includes a dispensary and consultation rooms for the study of pharmacy, specialist laboratories for the study of animal behaviour, and a wide range of equipment, resources and facilities for science research and study.

From 2016, students will have access to a new building designed specifically for mathematics, physics and computer science, and additional, purpose-built facilities for engineering, health and social care and psychology are set to open in 2017.

Outside of your studies, you can meet up with friends in the range of venues located on campus, work out in the Sports and Recreation Centre, catch a show at the Lincoln Performing Arts Centre or enjoy a night out at the Engine Shed.

### An Award-winning Library

The University's Great Central Warehouse Library is open 24/7 during busy periods. Resources include more than 260,000 books and ebooks, approximately 50,000 print and electronic journals, databases, an online catalogue, specialist collections and audio and visual archives. The University bookshop, based in the library, offers discounts to students.

Specialist staff can help you to find resources and deliver training in software programs, statistics and referencing. Academic Subject Librarians work closely with Schools and departments to maintain and develop the resources needed for courses and provide assistance to students.

In addition to resources, the library provides a wide range of practical support for students' learning development, including one-to-one drop-in sessions and scheduled workshops.

# A Supportive Community



## Student Support Services

When you arrive at the University of Lincoln, you will join a friendly and welcoming, close-knit academic community of staff and students, with a range of support that you can access throughout your time here.

### We are Here to Help

In addition to academic support from your personal tutor, the Student Services Team offers a range of support services to help make your time at the University of Lincoln as successful and enjoyable as possible.

### Student Support Centre

The Student Support Centre is a central point of contact that links you with the University's support services. Staff are available to give advice and information on funding, fees and payments, housing and personal issues.

The following specialist teams are based in the Student Support Centre:

- The Advice Service
- The International Advice Team
- The Student Funding Team
- The Student Support Team.

**Further Information**  
Appointments and drop-in sessions are available for all of our services, please use the contact details below for information or visit [www.lincoln.ac.uk/studentsupport](http://www.lincoln.ac.uk/studentsupport)

**Student Support Centre**  
Telephone:  
+44 (0)1522 837080  
Email: [studentsupport@lincoln.ac.uk](mailto:studentsupport@lincoln.ac.uk)

**Student Wellbeing Centre**  
Telephone:  
+44 (0)1522 886400  
Email: [studentwellbeing@lincoln.ac.uk](mailto:studentwellbeing@lincoln.ac.uk)

**Student Health Centre**  
Telephone:  
+44 (0)1522 870010

Staff in the International Advice Team are the only people who can legally give you immigration advice at the University of Lincoln. We provide specialist student-related immigration advice on areas including Tier 4 visa, Schengen visas, working, dependants and University issues in relation to your visa. We also run specialist immigration advice drop-in sessions and Tier 4 visa workshops throughout the year.

### Student Wellbeing Centre

Our team of professional staff offer impartial and confidential support, advice and guidance on issues that may affect your study, including disabilities, specific learning differences, mental health or medical conditions. The following specialist teams are based in the Student Wellbeing Centre:

- The Disability Service
- The Counselling Service
- The Chaplaincy Service.

### Student Health Centre

There is a Health Centre on campus which offers appointments with doctors and nurses. The Centre specialises in providing student-focused healthcare and information. You can register with the practice as soon as you have enrolled at the University.

# Develop Your English Language Skills

## English Language Support

The English Language Centre provides a range of support for our international students. Our services are designed to help you to improve your English language and academic study skills.



Courses, workshops and drop-ins offer support throughout the year.



Our pre-sessional programmes can help you improve your English language level for entry.

### University of Lincoln English Language Centre

The English Language Centre (ELC) provides a range of support to help you improve your English language skills while you are studying at Lincoln. The friendly and experienced ELC team is here to guide your learning and ensure you have every opportunity to succeed on your course.

We offer the following areas of English language support for international students:

- Pre-sessional English Language and Academic Study Skills course
- In-sessional English for Academic Purposes language support throughout the academic year.

### Pre-sessional English and Academic Study Skills (PEASS) Courses

Our twenty-week, ten-week and five-week PEASS programmes are designed for international students who are planning to join either undergraduate or postgraduate courses at the University of Lincoln. If you need to improve your English language level for entry, or would like to prepare for studying in a UK university before starting your degree, then we have the course for you.

### In-sessional English for Academic Purposes Language Support

We know that studying in a foreign language can be very challenging. Therefore, the ELC offers a range of courses and workshops, as well as a regular drop-in service, if you need support. All of our courses and services are completely free and run throughout the academic year.

### Our Courses

- Writing and Grammar for Academic English
- Culture and Conversation
- Active Listening
- Better Pronunciation
- Seminar Discussion Skills
- Effective Presentation Skills
- Critical Reading Skills
- English for Dissertation Writing
- Top-up English (for general English study)
- English for Business

Further Information  
English Language Centre  
Telephone:  
+44 (0)1522 886102  
Email: englishlanguage@lincoln.ac.uk

# The Students' Union



## Lincoln Students' Union



The Students' Union is a student-led organisation run on behalf of University of Lincoln students. Its aim is to ensure that you have a great experience at Lincoln and are supported to fulfil your potential.

### Award Winning

Lincoln Students' Union won the title Students' Union of the Year at the National Union of Students Awards 2014.

### Supporting You

The Students' Union provides support, advice, representation, opportunities and activities in a friendly and welcoming environment. Looking after your interests on campus and beyond is central to the Union, which works closely with the University, resident associations and the local community to ensure you have the best experience possible at Lincoln.

You will automatically become a member of our Students' Union and have access to all Union services when you enrol.

### Advice Centre

Our friendly advice centre offers free, independent and impartial advice on a range of academic issues such as assessment appeals, mitigating circumstances, complaints, exam misconduct, and other matters such as housing, debt and welfare advice and support.

### Get Involved

The Students' Union offers a range of services and support including:

- Sport, societies and group membership, with more than 120 societies to choose from, as well as events and trips throughout the year
- Welfare support, for help on all issues connected with housing, health and student rights
- Volunteering opportunities with a wide range of local, national and international organisations
- Student venues on campus, where you can catch up with friends over a drink or meal, go to a student night or listen to live music
- The Job Shop, which advertises employment and work experience opportunities
- Student representatives, who work with students and the University to enhance your experience and support you with academic issues.

### Students' Union Venues

The Students' Union runs all of the venues across campus. The Engine Shed is a late night venue which hosts two weekly club nights, as well as regular live music and comedy.

As a University of Lincoln student, you can purchase an NUS Extra card and gain access to hundreds of in-store and online discounts from national and local retailers and restaurants.

### The International Students' Committee

The Students' Union has an elected International Students Officer to offer support and represent your views. This Officer is also Chair of the International Students' Committee, which is a forum for you to make new friends, practise your English and diversify your knowledge of different countries and cultures. Everyone is welcome to attend meetings and events. You can also learn new languages by participating in lessons run by fellow students.

### Further Information Students' Union

f /lincolnsu  
t @lincolnSU  
@unilincolnsu  
lincolnSU

T: +44 (0)1522 886006  
E: reception@lincolnsu.com  
www.lincolnsu.com



# Your Future Career

## Careers Advice and Support

# 93%

of our graduates were in employment or further study within six months of completing their course, according to the most recent Destinations of Leavers from Higher Education Survey.\*

Many University of Lincoln graduates go on to successful careers around the world. At Lincoln, our dedicated team of employment professionals can help you develop the knowledge, skills, confidence and experience to get the best start in your chosen career.

You can find Lincoln graduates working around the world at:

- BBC
- BP
- Canon
- Cisco
- Coms
- Crédit Agricole
- Disney
- Environment Agency
- Ernst and Young
- French Connection
- Heritage Lottery Fund
- HM Revenue & Customs
- ITV
- M&C Saatchi
- National Grid
- Nintendo
- NHS
- Nokia
- RAF
- Reuters
- Rolls-Royce
- Siemens
- Sony
- Spotify
- The FA
- The Guardian
- Thomas Cook
- Unicef
- Universal Music



A range of tailored, individual support is available to help you succeed in your future career.



The average graduate earns £150,000 more over their lifetime than someone with A Levels alone.

### Getting a Job

Nine out of ten of our most recent graduates were in work or further study within six months of finishing their course, with two thirds in graduate-level roles.\* Our pioneering approach to working with employers has been acknowledged through a series of national awards and accolades including a Lord Stafford Award – in recognition of our partnerships with businesses – and a Times Higher Education Award.

Support from the University does not end when you finish your studies. As a graduate of the University of Lincoln, you can continue to access careers support and other tailored services for graduates for up to three years, helping to keep you on track with your chosen career.

If you decide to start your own business, Sparkhouse, the University's award-winning business incubation centre, can help support the development of your innovative and creative ideas. Sparkhouse can provide office accommodation, start-up advice and support through its management team and links to other agencies and professional services.\*\*

### One-to-one Support

Our dedicated Careers Advisers are available to provide you with the individual support and information you need when considering your future. You can make a one-to-one appointment or take part in the general drop-in sessions that run throughout the week during term time. There are a range of workshops available from job hunting to interview techniques. An employer mentor scheme is available on some courses.

\*Graduate employment figures from the Destinations of Leavers from Higher Education Survey relate to UK students only.

In addition to advertising graduate positions, the Careers & Employability Team organises a range of careers-related events throughout the year including employability boot camps and an annual student and graduate recruitment fair.

## Your Future Career

### Choose the Lincoln Award

In an increasingly competitive job market, employers are looking for candidates who stand out. The Lincoln Award allows you to acquire transferable skills, in addition to those learnt on your course, and to showcase your achievements to prospective employers. The Award is achieved by completing a series of employability-related workshops alongside part-time employment, or voluntary work experience and extracurricular activities. You can apply through the Student Job Shop and are supported throughout the scheme by your College Careers Adviser.

### Choose a Master's Route

At Lincoln, you can choose a four-year degree that will lead to a Master's qualification. Many programmes now offer this route to students who are looking to undertake postgraduate study. A Master's degree is highly regarded by employers in all industries.

### Choose Time in Industry

Many of our students choose to undertake a work placement during their course to gain industry experience and apply their knowledge in a professional setting. This may take the form of a sandwich year between the second and third years of study or a shorter placement during the summer break. Work placements can give you a greater insight into your chosen sector and usually lead to a deeper understanding that can aid your final-year assignments and dissertation.\*\*

### Choose an Internship

Working as an intern in an organisation for between three and 12 months after graduation boosts confidence and workplace skills. It is also a positive way to make valuable contacts in your chosen profession.\*\*

Knowledge Transfer Partnerships (KTP) is a long-established government scheme that facilitates the transfer of expertise from a university to a company. KTPs provide high-calibre graduates with the opportunity to work within an organisation from six months to three years tackling specific transformational projects, with supervision from our academics.\*\*

### Choose the Undergraduate Research Opportunities Scheme (UROS)

UROS aims to engage students in research alongside our academics, improving your skills and employability while contributing to groundbreaking research. You are eligible to apply during your second or third year and, if successful, you receive financial support to enable you to participate in a live academic research project.

### Choose a Mentor

Students on some of our courses can join the Employability Mentoring Scheme, a project which pairs students with senior staff and professionals from leading regional companies. Students gain support and guidance via one-to-one meetings and shadow their mentor at work, allowing them to gain a real insight into their chosen sector.

**Further Information**  
Careers and Employability  
Telephone:  
+44 (0)1522 837828  
Email: [careers@lincoln.ac.uk](mailto:careers@lincoln.ac.uk)  
[www.uolcareers.co.uk](http://www.uolcareers.co.uk)  
[@UoLcareers](https://twitter.com/UoLcareers)

\*\*Subject to you obtaining the correct visa.

## University of Lincoln Alumni

Support from the University does not end when you finish your studies. After you graduate, you become a member of our global alumni community, with access to a range of benefits and services wherever you are in the world.



You can keep in touch with friends and the University after you graduate.



You could be mentored by a graduate with experience in your field of study.

### Supporting Your Career

As a member of our alumni, we will help you stay on track with your chosen career path, offering free tailored careers support and guidance for up to three years after you graduate.

### Discount and Offers

University of Lincoln alumni benefit from an exclusive range of offers and discounts from business and legal services to healthcare, hotels, holiday and travel. To check the current list of benefits, please visit [www.lincoln.ac.uk/alumni](http://www.lincoln.ac.uk/alumni)

### Scholarships

EU University of Lincoln alumni qualify for a 30% scholarship on taught MA, MBA, MFA, MSc, LLM, MRes and MCLinRes postgraduate programmes. There is a 20% scholarship on research programmes. If you are a EU student and hold a University of Lincoln undergraduate or postgraduate degree, you will automatically be awarded the discount. Visit [www.lincoln.ac.uk/scholarships](http://www.lincoln.ac.uk/scholarships) for further details.

Self-funding international (non-UK/EU) students who have previously studied one of our undergraduate courses and progress to a postgraduate programme at the University of Lincoln, qualify for a £2,000 scholarship, which will be deducted from course fees. For further information, please visit our website or contact [international@lincoln.ac.uk](mailto:international@lincoln.ac.uk)

### Stay Connected

We would love to hear where your career takes you and hope you will keep in touch with us at the University of Lincoln. As an alumni member you will receive invitations to receptions and social gatherings, exhibition openings, lectures by eminent speakers, networking opportunities and other events. We hold alumni receptions around the UK and overseas, and hope to see you at an event in the future.

### International Ambassador

As a member of our global alumni community, you may become an international ambassador, representing and promoting the University in your home country.

### Further Information

Alumni Office

Telephone:  
+44 (0)1522 835858  
Email: [alumni@lincoln.ac.uk](mailto:alumni@lincoln.ac.uk)  
[www.lincoln.ac.uk/alumni](http://www.lincoln.ac.uk/alumni)  
[@lincolnalumniuk](https://twitter.com/lincolnalumniuk)





# World-leading Research

## Research Excellence

At the University of Lincoln, you will join an academic community whose mission is to pursue the highest standards of research with talented academics, researchers and students from across the world.

### How we are changing the world:

- Fighting cancer with 3D imaging technology
- Developing robot intelligence for real-world applications
- Discovering a link between the flu vaccine and a reduction in stroke risk
- Developing a tool to diagnose language delays in infants.
- Developing a 3D mapping mobile app, in conjunction with Google, to enable blind people to circumnavigate unfamiliar surroundings.

### Get Involved in Research

During your course, you have the opportunity to contribute to research projects and conduct your own studies. Engaging with research builds skills such as critical thinking and can help you to gain relevant experience in your subject area, which is highly valued by employers. It means you can be part of exciting breakthroughs that could potentially change the world we live in.

### Research Investment

Significant and targeted investment at the University of Lincoln has attracted world-class staff, creative students and successful business collaborations. From state-of-the-art equipment and new buildings to investment in specialist facilities and archives, Lincoln offers a vibrant academic environment in which to undertake research-informed study.

### Training and Support

At the University of Lincoln, you will benefit from a structured programme of training to enable you to develop the advanced analytical, critical-thinking and problem-solving skills you will need for your study and future career. You may have opportunities to present and publish your work and to attend relevant conferences.

### University Research Office

The University of Lincoln's Research Office provides expert guidance in areas of research funding and support. This includes help with the preparation and submission of applications to research councils, the European Commission, government bodies and UK charities.

### Research Excellence

The quality and breadth of research at the University of Lincoln was highlighted in the national Research Excellence Framework 2014 (REF 2014). More than half of the University's submitted research was rated as internationally excellent or world leading. The University was placed in the top ten nationally for the quality of its research outputs in two areas of the REF 2014, reflecting the substantial investments made in developing science and health research at Lincoln.

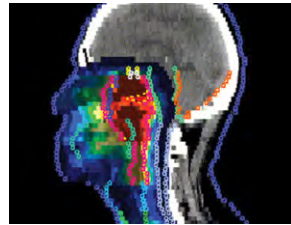
In its largest Unit of Assessment, 'Allied Health Professions, Dentistry, Nursing and Pharmacy', Lincoln was placed 10th in the UK out of 94 institutions for the quality of its outputs.

In the 'Agriculture, Veterinary and Food Science' subject area, Lincoln was placed second out of 29 institutions for the quality of its outputs. This area drew together Lincoln's specialisms in Animal Behaviour, Welfare and Cognition; and Evolution and Ecology.

### Engage in Research

"I have been working with Professor Tim Hodgson, alongside my studies, developing eye movement tracking technology for the early diagnosis of neurodegenerative diseases such as dementia and Parkinson's disease. Getting involved in research means that I am contributing something real and relevant to the field alongside already established academics."

*Jade Pickering,  
Psychology student*



**3D Imaging Technology in the Fight Against Cancer**

Distinguished Professor Nigel Allinson MBE is leading a team to develop more effective and shorter therapy treatment for cancer sufferers. The research involves using image engineering technologies developed at the University to provide accurate measurement of proton therapy (an advanced form of radiotherapy) doses and 3D images of where radiation is absorbed at a tumour site. The study aims to make the treatment more effective and available to a wider range of patients.



**Developing Robot Intelligence**

Professor Tom Duckett from the School of Computer Science is leading a multimillion euro project to create mobile robots that are able to operate intelligently and independently in real-world environments. The aim is to create service robots that will work with people and learn from long-term experiences. This technology could have many applications, including developments in supporting security guards and care home workers.



**Informing Parliamentary Reform**

Research from the School of Social & Political Sciences has influenced the UK's political agenda for more than two decades. Academics in the School are recognised as leading authorities on topics across the political spectrum, conducting groundbreaking research on elected bodies, political representation and parliamentary scrutiny. Their innovative recommendations have influenced public policy locally and nationally.



**Measuring Child Poverty**

Steve McKay, Distinguished Professor in Social Research, has conducted a highly influential study exploring the measures used to evaluate child poverty in the UK. His findings challenge archaic methods of measuring financial thresholds and advocate that cases are examined on an individual basis. His recommendations have been incorporated into the Child Poverty Act 2010 and his work continues to bring child poverty to the forefront of public, academic and political agendas.



**Working with Google to Help Blind People 'See'**

Funded by a Google Faculty Research Award, computer scientists at the University of Lincoln are developing new adaptive mobile technology which could enable blind and visually impaired people to 'see' through their smartphone or tablet. Colour and depth sensor technology will be used to enable 3D mapping and localisation, navigation and object recognition. The team will then develop the best interface to relay this to users – whether that is vibrations, sounds or the spoken word.

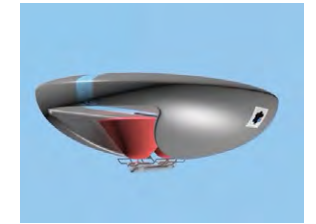
**Flu Vaccine May Cut Stroke Risk**

Research led by Professor Niro Siriwardena from the Lincoln School of Health and Social Care, and funded by the National Institute of Health Research, has shown that patients who have been vaccinated against influenza are 24% less likely to suffer a stroke in the same flu season. These findings were published in the scientific journal *Vaccine*. Previously, the same research team showed a similar link between flu vaccination and a reduced risk of heart attack.



**Airships – the Future of Aviation?**

Researchers have completed a major investigation into passenger airships as part of a multinational project designed to drive innovation in the development of green transportation. Lincoln's team has focused on how to make the most efficient use of the energy source for airships, by harvesting energy generated by photovoltaic cells mounted on the upper surface of an airship. Airships could provide a lower-cost, sustainable alternative to conventional modes of transport.



**Nanodevice Could Improve Cancer Treatment Options**

Cancer treatment options could be drastically improved with the creation of a diagnostic 'nanodecoder' being developed by researchers from around the world. The device will enable more detailed evaluation of how diseased tissues respond to therapies. Lincoln's involvement will be led by Dr Enrico Ferrari who specialises in assembling proteins, and Dr Ishwar Singh who has expertise on DNA-binding molecules.



**Language Tool to Decode Baby Talk**

Dr Kerstin Meints from the School of Psychology is working with colleagues to develop the first standardised UK speech and language development tool. This tool will allow researchers, educators and health professionals to establish language development norms for UK children (aged 8 months to 18 months) and could radically improve the diagnosis of language delays in infants.



**Uncovering the Past**

The University of Lincoln's renowned conservation consultancy division, Crick Smith, is safeguarding the historic interiors of important national landmarks, from industrial buildings to historic palaces. The team uses specialised preservation techniques and architectural paint research to uncover the decorative histories of buildings and restore them to their former glory. Projects have included HMS Victory, Lord Nelson's famous warship, and the Cast Courts in the Victoria and Albert Museum, London.



# Visit Us

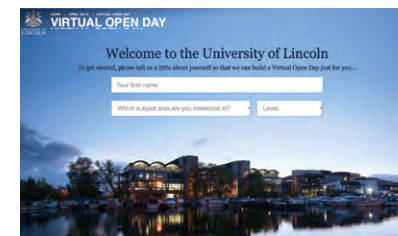


## Find Out More

An Open Day is the ideal way to discover more about the University and the city of Lincoln. Our friendly staff and students will show you our excellent facilities and provide an insight into living and learning in Lincoln.



Talk to our team of International Officers face-to-face in your country.



If you can't visit us in person, visit our website to experience a virtual Open Day.

### Visit Us in Your Country

Our team of International Officers regularly attend both British Council and Agent Representative Exhibitions in your country. We meet many potential students and their parents at these events; if you have the opportunity to come and meet a representative from the University of Lincoln, we would be pleased to discuss with you any aspect of becoming a student with us.

Full details about where we will be travelling can be found online at [www.lincoln.ac.uk/yourcountry](http://www.lincoln.ac.uk/yourcountry). You can find a wealth of other information on our website, including virtual tours of the campus and city.

### Virtual Open Days

Virtual Open Days offer you an opportunity to take a tour of the campus and view our facilities without having to travel to Lincoln. Find out more on our website at [www.lincoln.ac.uk/vod](http://www.lincoln.ac.uk/vod)

### Informal Tours

If you are in the UK and would like to visit the University, we can provide informal tours throughout the year. Our students and staff will show you around and answer any questions you may have. You can also view our facilities and on-campus accommodation. Contact the International Office Team if you would like to arrange a tour of the campus.

### Keep in Touch

There are many ways for you to engage with the University of Lincoln and ask any questions you may have.

To keep up to date with the latest news and information on activities, events and research from the University, you can follow us on Twitter @UniLincoln or like us on Facebook at [facebook.com/universityoflincoln](https://facebook.com/universityoflincoln)

We hold regular online Q&A sessions throughout the year, please visit our website for dates and more information.

### Further Information

#### International Office

Telephone:

+44 (0)1522 886040

Email: [international@lincoln.ac.uk](mailto:international@lincoln.ac.uk)

[lincoln.ac.uk](http://lincoln.ac.uk)

University of Lincoln UK

@UOLIntOffice



# Financial Support at Lincoln

## Fees, Funding and Scholarships

Funding your time at university may seem complicated but we are here to help with any questions you may have. A range of scholarships are available for overseas students to provide financial assistance.

Approximate living costs (per year) excluding accommodation:

- Food: £3,000
- Bills and other shopping: £700
- Entertainment: £700
- Clothing: £450
- Travel: £400
- Books: £400
- Average £5,650 per year.

Accommodation costs can vary depending on the length of contract.

Please visit [www.lincoln.ac.uk/accommodation](http://www.lincoln.ac.uk/accommodation) for further information.



A range of financial assistance is available to help make studying in the UK more affordable.



Subject-specific financial support include bursaries for selected Engineering students.

### International Scholarships

At the University of Lincoln, we understand the importance of investing in your future and we want to provide as much financial assistance as possible. That is why we have a number of scholarships available to help you study with us, including Alumni Scholarships, Global Postgraduate Scholarships, International Academic Excellence Scholarships, Chevening Scholarships, Commonwealth Scholarships, Engineering Bursaries and Mathematics and Physics Scholarships.

For more information on the University of Lincoln International Scholarships, please send an email to [international@lincoln.ac.uk](mailto:international@lincoln.ac.uk) or visit [www.lincoln.ac.uk/internationalscholarships](http://www.lincoln.ac.uk/internationalscholarships)

### Santander International Scholarships

Santander International Scholarships recognise academic excellence in new students joining the University of Lincoln from overseas in 2016.

As part of the University's status as a member of the Santander Universities Global Division, students at Lincoln can benefit from a range of scholarships, research opportunities, travel grants, business support and internship placements offered in partnership with Santander.

The awards will be presented to eligible international students with the highest academic qualifications. Successful scholarship winners will be selected by the University of Lincoln's International Office Team on application to the University. There is no separate application form.

### Students from the EU

Qualifying as a student from the European Union depends on your nationality and residency.

Students from EU countries who meet the eligibility criteria are able to obtain a tuition fee loan. This means that the Government covers the cost of tuition fees for students in the form of a loan. This loan does not have to be repaid until the April after you graduate and only when you earn a certain level of salary. For more information, please visit [www.gov.uk/student-finance](http://www.gov.uk/student-finance)

**Further Information**  
The University of Lincoln  
Outreach, Advice and  
Guidance Service  
Telephone:  
+44 (0)1522 837080  
Email: [oags@lincoln.ac.uk](mailto:oags@lincoln.ac.uk)  
[www.lincoln.ac.uk/fees](http://www.lincoln.ac.uk/fees)

Further information and full terms and conditions can be found on our website at [www.lincoln.ac.uk/international](http://www.lincoln.ac.uk/international)



Apply  
to Lincoln

## Visas and Entry Requirements

Once you have decided to join the University of Lincoln, our friendly International Office Team will support you throughout the application process.

There are a number of ways you can apply to study with us. Undergraduate applications can be made through the Universities and Colleges Admissions Service (UCAS). You can also apply through one of our approved agents. Applications for postgraduate study should be made directly to the University via our website.

### Visas

Unless you are a national of the European Economic Area (EEA) or Switzerland, you will have to apply for a Tier 4 Student Visa from your home country before you come to Lincoln. You can only apply for a Tier 4 Student Visa if your course is full-time. Depending on the type and length of your course, your partner or children under the age of 18 may also be in a position to apply to come to the UK.

UK Visas and Immigration (UKVI) require you to be formally sponsored by a licensed UK higher education institution, such as the University of Lincoln. Once you have met all the conditions of your offer, accepted your unconditional offer and paid a £2,000 deposit, our International Admissions Team will issue you with a Confirmation of Acceptance for Studies (CAS) number. The CAS number will enable UKVI to access information about you.

Further information on how to apply for your visa is available from the UKVI website at [www.gov.uk/tier-4-general-visa](http://www.gov.uk/tier-4-general-visa)

### Terms and Conditions

The information in this prospectus is issued for the general guidance of students entering the University in 2016 and does not form part of any contract or offer.

References to national rankings are drawn from the most contemporaneous league tables available at the time of publication. These include *The Times and Sunday Times Good University Guide 2015*, the National Student Survey 2014, the Destinations of Leavers from Higher Education Survey 13/14 and [unistats.com](http://unistats.com)

Financial figures, entry requirements and league table results are correct at the time of going to print but may be subject to change. For the most up-to-date information please visit our website at [www.lincoln.ac.uk](http://www.lincoln.ac.uk)

For entry onto an undergraduate programme you must have completed secondary or high school studies equivalent to a UK A Level standard, or a recognised alternative such as the International Baccalaureate Diploma or an International Foundation programme.

For entry onto a postgraduate programme you must have completed an academic qualification equivalent to a UK second class honours degree (this is a minimum requirement).

Details of acceptable qualifications can be found on the international pages of the University's website. You will also need to meet the English Language proficiency requirements for your chosen course.

**Further Information**  
**International Office**  
Telephone:  
+44 (0)1522 886040  
Email: [international@lincoln.ac.uk](mailto:international@lincoln.ac.uk)

# Great Reasons to Discover Lincoln

## Great Teaching

The University of Lincoln was named among the UK's top 10 modern universities in *The Times and Sunday Times Good University Guide 2015* and in the top 40 English universities by the *Complete University Guide 2016*. We have some of the most satisfied students in the UK, rating in the top 20% nationally in a number of subject areas of the National Student Survey 2014. We are recognised for our pioneering approach to working with employers.

## Great Industry Links

The University's award-winning collaboration with Siemens is just one example of our innovative relationships with industry.

## Great Prospects

Nine out of ten of our most recent graduates were in work or further study six months after finishing their course, with two thirds in graduate-level roles. Lincoln ranks in the top 20 for graduate prospects in a number of subject areas in *The Times and Sunday Times Good University Guide 2015* with Engineering rated number one. Lincoln graduates secure jobs at major companies and organisations around the globe.

## Great Location

Lincoln is a great city for students and the campus is in the heart of the city centre. Steeped in history, you will find one of the finest cathedrals in Europe and a medieval castle, which is home to an original copy of the Magna Carta. Everything you need is just a short walk from our waterside campus.

## Great Family

We have an active alumni network, with Lincoln graduates working for major international companies, charities and organisations all over the world. Many of our most successful graduates return to Lincoln to share their knowledge with current students at our annual series of alumni networking events. Our ethos is to provide an education and experience which enables our students to achieve the future they want and that relationship extends long beyond graduation. Our students are part of the Lincoln family for life.

## Great Research

Lincoln is proud to be home to world-leading researchers who are making profound contributions to their subject areas. From developing new medical technologies to preserving rare architectural treasures, the work of Lincoln's academics and students makes a real difference to society. Coming to university is about joining an academic community and being engaged in research that has a real impact.

## Great Activities

We have an eclectic array of clubs and societies for our students to get involved in – spanning interests from football to Harry Potter. Our sports teams compete in British Universities & Colleges Sports (BUCS) competitions. Lincoln Students' Union won the title Students' Union of the Year at the National Union of Students (NUS) Awards 2014.

## Great Minds

Alongside our world-class academic staff, some of the finest thinkers in their fields come to Lincoln to deliver inspirational talks to our students. Recent guest speakers include award-winning actor John Hurt, Olympian and sports presenter Steve Cram, designer Alberto Alessi and scientist Professor Lord Robert Winston.

If you require this prospectus in an alternative format, please contact us:  
Telephone: +44 (0)1522 886644  
Minicom: +44 (0)1522 886055  
Email: [enquiries@lincoln.ac.uk](mailto:enquiries@lincoln.ac.uk)

**Photography**  
Adam Rhoades Photography, Andy Weekes, Electric Egg, Greg Harding Photography, Larry Hickmott, Light and Dreams Photography, Nigel Barker Photography, Phil Crow, Scene Photography,

**Design**  
Z3/Studio  
[www.designbyz3.com](http://www.designbyz3.com)

A Life-changing Experience.



UNIVERSITY OF  
**LINCOLN**  
UNITED KINGDOM

University of Lincoln  
Brayford Pool  
Lincoln LN6 7TS

+44 (0)1522 886040  
international@lincoln.ac.uk  
www.lincoln.ac.uk