

2020
—
2021

PROGRAMS AND ADMISSIONS INTERNATIONAL EDITION

**Bachelor's,
Master's and PhD**

WHY CHOOSE THE UNIVERSITY OF OTTAWA

HIGH QUALITY EDUCATION

OVER 450
BACHELOR'S,
MASTER'S AND
PHD PROGRAMS



AMONG THE TOP **1%**
OF UNIVERSITIES IN
THE WORLD¹



ONE OF THE 10
**LEADING
RESEARCH
UNIVERSITIES**
IN CANADA²



DEGREES
**RECOGNIZED
WORLDWIDE**
AS EQUIVALENT TO U.S.
AND BRITISH DEGREES



EXCEPTIONAL QUALITY OF LIFE

OTTAWA:

- CONSISTENTLY RANKS AMONG THE WORLD'S TOP 20 CITIES TO LIVE
- ONE OF THE BEST CITIES FOR QUALITY OF LIFE IN CANADA³



HIGHLY TRAINED
SECURITY GUARDS AND
900+ SURVEILLANCE
CAMERAS ENSURE
STUDENT SAFETY
24 HOURS A DAY,
7 DAYS A WEEK.

THE UNITED NATIONS RANKS
CANADA AS **ONE OF THE
BEST PLACES TO LIVE**

SERVICES TO HELP YOU SUCCEED

19 MENTORING CENTRES ACROSS CAMPUS TO HELP YOU ACHIEVE ACADEMIC SUCCESS

20+ WORKSHOPS

70 STUDY GROUPS

ACADEMIC WRITING HELP CENTRE

TO IMPROVE YOUR WRITING
SKILLS AND ACADEMIC PAPERS



PET THERAPY, PEER
COUNSELLING,
WORKSHOPS AND
PROFESSIONAL
**COUNSELLING
AND COACHING**
TO HELP YOU
OVERCOME
TOUGH TIMES



STRONG INTERNATIONAL COMMUNITY



- **42,000** STUDENTS
- **7,000** INTERNATIONAL STUDENTS
- A DIVERSE MIX OF STUDENTS FROM **150** COUNTRIES

14 INTERNATIONAL STUDENT MENTORS
DEDICATED TO MAKING YOUR TRANSITION
TO CANADA SUCCESSFUL AND FUN



SOURCES

¹ Times Higher Education World University Rankings 2019: www.timeshighereducation.com/world-university-rankings

² U.S. News & World Report. Best Global Universities: www.usnews.com/education/best-global-universities/canada?int=9cd108

³ MoneySense. "Canada's Best Places to Live 2017": moneysense.ca/canadas-best-places-to-live-2017-full-ranking

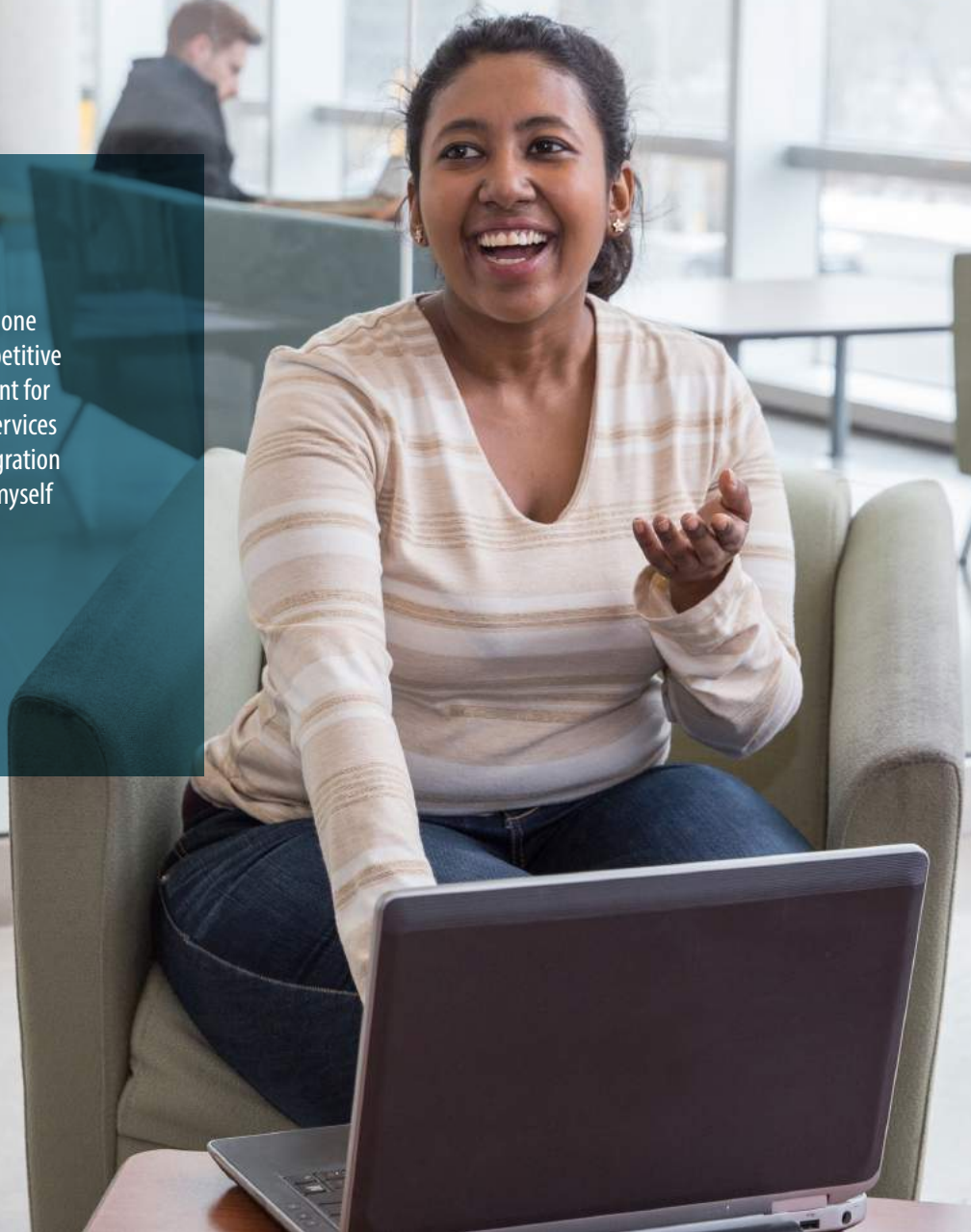
INTERNATIONAL STUDENT INSIGHT

WHY DO YOU RECOMMEND THE UNIVERSITY OF OTTAWA?

"The University of Ottawa is a great place to hone the skills you need to succeed in today's competitive global workplace. It is also a great environment for international students, offering a variety of services and initiatives for academic and cultural integration that have helped international students like myself adapt quickly and easily to the new environment."

SHRUTHI MADHURIKA NAOMI

FROM CHENNAI, INDIA
STUDENT IN E-BUSINESS TECHNOLOGIES



This document contains QR codes. Follow these simple steps to use them.

- Open the camera on your smartphone.
- Hold your device over a QR code so that the code is clearly visible within your smartphone screen.
- If necessary, tap the link that appears on your smartphone.



PREPARE YOUR BUDGET



HOUSING

uOttawa residence (8 to 12 months)

Traditional residence (double occupancy bedroom)	\$6,783
Studio (double occupancy studios)	\$8,371
Suite (2 single occupancy bedrooms)	\$9,631
Apartment (4-bedroom apartments)	\$11,289

More housing options are available.



TRANSPORTATION

U-Pass (public transit pass)
for all full-time students

Included in your tuition



MEDICAL INSURANCE ⁴

University Health Insurance Plan (12 months)

Mandatory for international students
and their dependents

\$636



CELLPHONE PLAN

Cellphone plan with data (per month)

\$60



INTERNET

Internet plan (per month)

\$60

*Free Wi-Fi is available throughout the campus,
including in residences.*



FOOD ⁴

uOttawa meal plan (8 months)

7-day unlimited access

\$5,850

5-day unlimited access

\$5,225

Groceries (per month)

\$300

*5-day unlimited access meal plan is mandatory for 90 University,
LeBlanc, Marchand, Stanton and Thompson residences.*



CLOTHING

Winter jacket

\$150

Winter boots

\$120

Shoes

\$60

Jeans

\$50



**COST OF LIVING FOR
A STUDENT IN OTTAWA ⁵**
\$1,600/month

RESIDENCES



COMPARE RESIDENCES
AND FEES

ON-CAMPUS HOUSING

Studies show that students living in residence get better grades. Living in residence comes with lots of academic and practical support, plus:

- Furnished residences
- Utilities, wireless internet and 24-hour on-site assistance
- Being on campus or within a short walking distance
- Events organized by on-site community advisers and mentors to make new friendships easier
- Special residences for first-year students
- Designated spaces for upper-year students

SEE THE TIMELINE ON PAGE 12 FOR IMPORTANT DATES



**GUARANTEED
HOUSING FOR ALL FIRST
YEAR STUDENTS WHO
APPLY BY THE DEADLINE**

OFF-CAMPUS HOUSING

- Preferred choice for graduate and mature students
- Nearby neighbourhoods like Sandy Hill and the Byward Market, combined with your U-Pass, make it easy to live off campus

⁴Some exceptions apply. Figures are based on fees for the 2019–2020 academic year (September to April) and are subject to change. Visit uOttawa.ca for up-to-date information.

⁵Consumer prices in Ottawa are 25% lower than in Toronto! (reference: www.numbeo.com/cost-of-living)

FINANCE YOUR STUDIES



WORK FULL TIME ON CAMPUS
AND PART TIME OFF CAMPUS
WITH **JUST YOUR STUDY PERMIT**

PARTICIPATE IN CO-OP

coop.uOttawa.ca

Apply your academic knowledge during paid work terms:

- Up to four paid work terms of four months each.
- Earn \$9,000 per placement on average.
- Gain up to 16 months of experience in your field.
- Earn a CO-OP mention on your diploma.
- Build your network of valuable contacts.

Examples of placements offered:

- Services Canada
- Suncor Energy Inc.
- FINTRAC
- Shopify
- Brookfield Renewable Energy Group
- Alcatel-Lucent Canada Inc.

PARTICIPATE IN THE WORK-STUDY PROGRAM

uOttawa.ca/financial-aid-awards/work-study-program

Work in a job that fits around your course schedule:

- Earn approximately \$4,000 by working 10 to 12 hours a week.
- Choose from 1,700 positions available on campus each year.

Examples of jobs offered:

- Assistant computer technician
- Assistant editor
- Assistant project officer
- Junior information officer
- Research assistant
- Marketing assistant



TAKE ADVANTAGE
OF THE QUALITY JOBS
OFFERED IN **OTTAWA,**
CANADA'S CAPITAL

SEE THE TIMELINE ON PAGE 12 FOR IMPORTANT DATES

UNDERGRADUATE TUITION FEES



TUITION FEES

uOttawa.ca/university-fees

BACHELOR'S	
ARTS	\$37,383
HEALTH SCIENCES — NURSING	\$44,150
HEALTH SCIENCES — ALL OTHER PROGRAMS	\$37,369
SCIENCE — BIOTECHNOLOGY, PHYSICS / ELECTRICAL ENGINEERING	\$48,353
SCIENCE — ALL OTHER PROGRAMS	\$37,378
SOCIAL SCIENCES	\$37,367
ENGINEERING	\$53,955
TELFER SCHOOL OF MANAGEMENT	\$45,837



SCHOLARSHIPS AND BURSARIES

uOttawa.ca/financial-aid-awards

MERIT SCHOLARSHIP

BASED ON YOUR UNIVERSITY GRADES

\$1,000 FOR EACH FULL-TIME TERM

82.5% MINIMUM AVERAGE

UP TO \$10,000 DURING YOUR STUDIES

SEE THE TIMELINE ON PAGE 12
FOR IMPORTANT DATES

STUDY IN FRENCH TO SAVE ON TUITION!

uOttawa.ca/university-fees/differential-tuition-fee-exemption

International students enrolled full time in a French-language program or in French Immersion pay the same tuition fees as Canadian students.

To be eligible for the differential tuition fee exemption, you must:

- be admitted to a program offered in French, and
- be enrolled as a full-time student and take a minimum of 9 units (3 courses) taught in French per term

OR

- be admitted to a program offered in English with a French immersion option, and
- meet the admission requirements of the French Immersion Stream



FIND TUITION FEES
FOR A PROGRAM



SCHOLARSHIPS AVAILABLE FOR
OUTSTANDING INTERNATIONAL
STUDENTS

*Figures are based on fees for the 2019–2020 academic year (September to April) and are subject to change.
Totals include incidental fees and U-Pass. Full-time undergraduate students must be enrolled for two terms per academic year.*

BACHELOR'S, MASTER'S AND PhD

Bachelor's

- Four-year degree
- For students who have completed secondary school (or the equivalent)

Master's

- For students who have completed an honour's bachelor's
- Can be completed four different ways:
 - master's with thesis
 - master's with research paper
 - master's by coursework
 - professional master's

PhD

- The highest level of study — for students who have completed a master's (or equivalent)
- Coursework related to your subject followed by at least two years writing your thesis

LEGEND

B Bachelor's

GD Graduate diploma

M Master's

M+ Professional master's

D Doctorate (PhD)

CO-OP (undergraduate)

CO-OP (graduate – master's)

F Offered in French only

E Undergraduate program offered in English only

E+ Graduate program offered in English only

Mn Can be added as a second discipline during undergraduate studies only. Direct admission to this program is not possible.

DIRECT-ENTRY FACULTIES

Programs that do not require prior university studies

FACULTY OF ARTS

Acting (BFA) **B**
 Art History **B**
 Arts **B**
 Bilingualism Studies **M**
 Canadian Studies **D**
 Classical Studies **M**
 Communication **B M M+ D C C**
 Communication and Political Science **B C**
 Communication and Sociology **B C**
Communication et lettres françaises **B C F**
 Conference Interpreting **M+**
 Digital Journalism **B**
 English **B M D C E**
 English as a Second Language (for non-anglophones only) **B E**
 Environmental Studies **B C**

Environmental Sustainability **M C**
 Ethics and Political Philosophy **B**
 French as a Second Language (for non-francophones only) **B F**
 Geography **B M D C**
 Greek and Roman Studies **B**
 History **B M D C C**
 History and Political Science **B C**
 Indigenous Studies **B**
 Information Studies **GD M M+ C**
Lettres françaises **B M D C F**
Lettres françaises (BA) et *éducation* (BE) **B F**
 Linguistics **B M D**
 Medieval and Renaissance Studies **B M**
 Music Studies **B**
 Music (BA or BMus) **B**
 Music (MA or MMus) **B M**
 Music (BMus) and Science (BSc) **B**
 Music Performance **GD**
 Philosophy **B M D**
 Philosophy and Political Science **B**
 Physical Geography and Geomatics (BA or BSc) **B C**
 Piano Pedagogy Research **GD**
 Psychology and Linguistics **B**
 Public Relations **B**

Religious Studies **B M D**
 Second-Language Teaching (ESL or FLS) **B**
 Spanish **M D**
 Theatre **B**
 Theatre (MFA) **M**
 Translation **B M D C**
 - French-English
 - French-Spanish-English
 Translation **M**
 - Chinese-English-Chinese
 Visual Arts (BFA) **B**
 Visual Arts (MFA) **M M+**
 World Literatures and Cultures **M**

MINORS **Mn**

Arabic Language and Culture
 Asian Studies
 Celtic Studies **E**
 Creative Writing **E**
 Digital Humanities
 English as a Second Language - basic or advanced (for non-anglophones only) **E**
 French as a Second Language - basic or advanced (for non-francophones only) **F**
 Geomatics and Spatial Analysis
 German Language and Culture
 Italian Language and Culture

Latin American Studies
Rédaction professionnelle et édition **F**
 Russian Language and Culture
 Spanish
Traduction vers le français **F**
 Translation into English

FACULTY OF ENGINEERING

Advanced Materials and Manufacturing **M D E+ C**
 Biochemistry (BSc) and Chemical Engineering (BASc) (Biotechnology) **B C**
 Bioinformatics **M**
 Biomedical Engineering **M D E+**
 Biomedical Mechanical Engineering **B C**
 Biomedical Mechanical Engineering (BASc) and Computing Technology (BSc) **B C**
 Chemical Engineering **B M D C E+**
 Chemical Engineering (BASc) and Computing Technology (BSc) **B C**
 Civil Engineering **B M D C E+**
 Civil Engineering (BASc) and Computing Technology (BSc) **B C**
 Computer Engineering **B C**
 Computer Science **B M D C C E+**

Computer Science and Mathematics (BSc) **B**

Computer Science Concentration in Applied Artificial Intelligence **M** **E+**

Data Science (Computer Science (BSc) and Mathematics (BSc)) **B** **C**

Electrical Engineering **B** **C**

Electrical Engineering (BAsc) and Computing Technology (BSc) **B** **C**

Electrical and Computer Engineering **M** **D** **E+**

Electronic Business **D**

Electronic Business Technologies **M** **C** **E+**

Engineering Management **M** **E+**

Environmental Engineering **M** **D** **E+**

Environmental Sustainability **M** **C**

Mechanical Engineering **B** **M** **D**

Mechanical Engineering (BAsc) and Computing Technology (BSc) **B** **C**

Physics (BSc) and Electrical Engineering (BAsc) **B**

Software Engineering **B** **C**

Systems Sciences **M**

Technology Project Management **GD** **E+**

MINOR **Mn**

Computer Science for Scientists

FACULTY OF HEALTH SCIENCES

Audiology **M+** **F**

Food and Nutrition Sciences **B**

Health Sciences **B**

Human Kinetics (BHK) Emphasis on social sciences **B**

Human Kinetics (BScHK) Emphasis on biophysical sciences **B**

Human Kinetics **M** **D**

Interdisciplinary Health Sciences **M**

Integrated Food Sciences (in partnership with Le Cordon Bleu) **B** **E**

Nursing **B** **M** **D**

Occupational Therapy **M+** **F**

Physiotherapy **M+** **F**

Population Health **D**

Primary Health Care for Nurse Practitioners **GD**

Rehabilitation Sciences **D**

Speech-Language Pathology **M+** **F**

MINOR **Mn**

Studies of Social Issues in Sport, Physical Activity and Leisure

Health Sciences

FACULTY OF SCIENCE

Biochemistry **B** **C**

Biochemistry (BSc) and Chemical Engineering (BAsc) (Biotechnology) **B** **C**

Bioinformatics **M** **E+**

Biology **B** **M** **D** **C** **E+**

Biomedical Science **B** **C**

Biopharmaceutical Science **B** **C**

Biostatistics **M** **E+**

Chemical and Environmental Toxicology **M** **D** **E+**

Chemistry **B** **M** **D** **C**

Data Science (Computer Science (BSc) and Mathematics (BSc)) **B** **C**

Earth Sciences **M** **D** **E+**

Environmental Geoscience **B** **C**

Environmental Science **B** **C**

Environmental Sustainability **M** **C**

Financial Mathematics and Economics **B** **C**

Geology **B** **C**

Geology-Physics **B** **C**

Mathematics **B** **M** **D** **C** **E+**

Mathematics and Economics **B** **C**

Music (BMus) and Science (BSc) **B**

Ophthalmic Medical Technology **B**

Physics **B** **M** **D** **C** **E+**

Physics (BSc) and Electrical Engineering (BAsc) **B** **C**

Physics-Mathematics **B** **C**

Science, Society and Policy **M** **E+**

Statistics **B** **C** **M** **D** **E+**

MINORS **Mn**

Biophysics

Life Sciences

FACULTY OF SOCIAL SCIENCES

Anthropology **B** **M** **C**

Anthropology and Sociology **B** **C**

Clinical Psychology **D**

Communication and Political Science **B** **C**

Communication and Sociology **B** **C**

Conflict Studies and Human Rights **B** **C**

Criminology **B** **M** **D**

Criminology and Women's Studies **B**

Economics **B** **M** **D** **C**

Economics and Political Science **B** **C**

Economics and Public Policy **B** **C**

Environmental Economics and Public Policy **B** **C**

Environmental Sustainability **M** **C**

Experimental Psychology **D**

Globalization and International Development **M** **C**

History and Political Science **B** **C**

International Development **D**

International Development and Globalization **B** **C**

International Economics and Development **B** **C**

International Studies and Modern Languages **B** **C**

Mathematics and Economics **B** **C**

Philosophy and Political Science **B**

Political Science **B** **M** **D** **C**

Political Science (BSocSc) and Juris Doctor (JD) **B** **F**

Psychology (BA) **B**

Psychology (BSc) **B**

Public Administration **B** **M** **D** **C**

Public Administration and Political Science **B** **C**

Public and International Affairs **M** **C**

Social Sciences **B**

Social Work **B** **M** **D** **F**

Sociology **B** **M** **D** **C**

Women's Studies **B** **M** **D** **C**

Women's Studies and Political Science **B** **C**

Women's Studies and Sociology **B** **C**

MINORS **Mn**

Aging Studies

Global Studies

Social Sciences of Health

TELFER SCHOOL OF MANAGEMENT

Accounting **B** **C**

Business Administration (MBA) (EMBA) **M+**

Business Administration (MBA) and Juris Doctor (JD) **B** **M+**

Business Administration (MBA) and Licentiate in Law (LLL) **B** **M+**

Business in Complex Project Leadership **M+** **E+**

Business Technology Management **B** **C** **E**

Chartered Professional Accountancy **GD**

Commerce (BCom) and Juris Doctor (JD) **B** **F**

Finance **B** **C**

Health Administration **M+** **E+**

Health Systems **M** **E+**

Healthcare Analytics **B** **C**

Human Resource Management **B** **C**

International Management **B** **C**

Leadership and Management **GD**

Management **B** **C** **M** **D** **E+**

Marketing **B** **C**

Professional programs in the faculties of Law, Education and Medicine are also available.



LEARN MORE ABOUT PROGRAMS
AND COURSES

SPOTLIGHT ON PROGRAMS



Our graduates enjoy successful, prosperous careers thanks to programs tailored to today's job market. Choose from **more than 450 programs** to find both what inspires you and what will propel you into a successful career.



CAREER OPPORTUNITIES
FOR ALL PROGRAMS



GEOLOGY

Geologists study the structure, evolution and dynamics of the Earth and its mineral and energy resources. Examining natural materials, they probe the Earth from its surface to its core, and model the processes that produced and shape its oceans and continents. Our programs are a balance of field-based learning and theoretical and analytical investigations directly relevant to society's needs.

CAREER OPPORTUNITIES

- Exploration and mining geologist
- Groundwater hydrogeologist
- Geophysicist
- Environmental geoscientist
- Volcanologist

STATISTICS

Governments, non-government organizations, businesses — everyone is collecting data about clients or products and feeling the impact of big data. Our program, accredited by the Statistical Society of Canada, will provide you with extensive training plus internship opportunities that will prepare you to navigate the world of data.

CAREER OPPORTUNITIES

- Data scientist
- Statistician
- Business intelligence analyst
- Data analyst
- Bioinformatician



INTERNATIONAL ECONOMICS AND DEVELOPMENT

Be part of the solution to the economic challenges shaping our 21st century societies. Learn how globalization affects individuals, industry, the public sector and entire nations. Our program will help you understand the economic concepts and the factors that shape economic growth and development, in both emerging and industrialized economies.

CAREER OPPORTUNITIES

- Economist
- Economic analyst
- Commerce officer
- International development officer
- International economic consultant

IT PAYS TO STUDY AT UOTTAWA!



ALUMNI EARN AN AVERAGE OF
\$56,000 ANNUALLY
ON GRADUATING WITH AN
HONOURS BACHELOR'S



95%
EMPLOYMENT RATE
FOR GRADUATES⁶

ALUMNUS INSIGHT

"The experience at the University of Ottawa is truly exceptional [...]. Be it finance, law, engineering or management, the programs are interactive and provide the necessary tools to succeed in the industry."

RAJ NARULA, P.ENG.
UNIVERSITY OF OTTAWA ALUMNUS
FOUNDER AND CEO, INCA SYNERGIES



Be eligible for the Government of Canada's Post Graduation Work Permit Program (PGWPP) after you complete your studies at the University of Ottawa.

- You can apply to the PGWPP up to 180 days after you obtain your notice of graduation.
- You are not required to have a Canadian job offer at the time of applying.
- You can work in any occupation anywhere in Canada, and change employers at any time.

The PGWPP allows recent uOttawa graduates to gain valuable Canadian work experience for a period of up to three years after their studies are completed. This helps graduates possibly qualify for permanent residence in Canada through the Canadian Experience Class for skilled workers.



JOIN OVER
210,000
UOTTAWA
ALUMNI AROUND
THE WORLD

⁶Employment rate two years after graduating

TIMELINE: STARTING UNDERGRADUATE STUDIES



STEP-BY-STEP ADMISSION FOR
INTERNATIONAL APPLICANTS

- Admission offers start being sent

— OCTOBER — NOVEMBER — DECEMBER — JANUARY — FEBRUARY — MAR

- Prepare to apply: read the international applicant information and view the step-by-step video at **uOttawa.ca/undergraduate-admissions/international-applicants** to get started.
- Application period begins. Apply at **ouac.on.ca**

- **Mid-January:** Recommended latest time to apply at **ouac.on.ca**

*Based on the 2019–2020 academic year (September to April). Dates are subject to change. Visit **uOttawa.ca** for up-to-date information.*

IN THE FALL

- Recommended time to apply for your study permit
- **April 1:** Deadline to apply
- **April 30:** Deadline to submit required documents
- **April 30:** Deadline to apply for prestigious undergraduate admission scholarships
- **June 1:** Deadline to apply and pay deposit for housing
- Start applying for Work-Study Program
- Deadline to pay tuition and housing fees
- **End of August to beginning of September:** Mandatory orientation session for new international students

CH — APRIL — MAY — JUNE — JULY — AUGUST — SEPTEMBER —

- Course enrolment begins. You must accept your offer of admission to be able to enrol in courses.
- Deadline to submit official transcript with final marks. Documents must be mailed to the admissions office (75 Laurier Avenue East, Ottawa, ON K1N 6N5, Canada).
- Classes begin
- **End of August to beginning of September:** Residences open



UNDERGRADUATE STUDIES



GENERAL REQUIREMENTS

Generally, you must meet the following criteria:

- You have obtained or are in the process of obtaining your secondary school diploma or your country's equivalent diploma.
- You are registered in or have passed at least five courses at the highest secondary school level offered.
- You are completing all of your intended program's prerequisites. You must complete all prerequisite courses for a program during your last year of secondary school, unless otherwise indicated.
- You have the minimum admission average required and meet the language requirements.

FALL AND WINTER APPLICATION PERIOD BEGINS	September 19
---	--------------

FALL TERM DEADLINES	
APPLICATION	April 1
SUBMIT REQUIRED DOCUMENTS	April 30

WINTER TERM DEADLINES	
APPLICATION	October 15
SUBMIT REQUIRED DOCUMENTS	October 30

SEE THE TIMELINE ON PAGE 12 FOR IMPORTANT DATES



APPLICATION PROCESS AND DEADLINES

www.ouac.on.ca

Universities in the province of Ontario, Canada, share an online application system run by the Ontario Universities' Application Centre (OUAC).

You must apply through the OUAC website using the OUAC 105 Undergraduate Application for International Candidates form.

Once you have completed and submitted the OUAC 105 form and paid the application fees, upload your documents for our admissions office using uoDoc, accessible through our uoZone student portal. We will email you instructions for access to your uoZone account within two weeks of receiving your application.

Admission to the University of Ottawa is limited and requires an excellent academic record. The minimum admission average is based on the competitiveness of each program. There are no entrance exams nor is there automatic access to programs. Admission is not guaranteed even if you meet all the requirements. You will receive a response to your application only after the admissions committee has assessed your file. For admission information, visit admission.uOttawa.ca.



STEP-BY-STEP ADMISSION FOR INTERNATIONAL APPLICANTS

BRITISH CURRICULUM (A-LEVELS)

You must have completed a minimum of two A-level subjects. However, if you have only completed two A-level subjects, you must also have completed five subjects overall (either AS-level or O-level). We do not admit based on predicted marks. Applicants must have the equivalent of two final A-level subjects to be eligible for admission. Applicants with four final AS-level are also eligible for admission.

For all programs, you must have O-level English (first language) with a minimum grade of B. AS-level or A-level English (first language) is also acceptable. Your other prerequisites must be A-level or AS-level subjects and you must have a minimum grade of C.

For programs requiring more than two prerequisite subjects, at least two of your prerequisite subjects must be at the A-level or AS-level.

Your other prerequisite subjects can be at the O-level. Your admission average is calculated based on either:

- two A-level subjects and three AS-level or O-level subjects
- three A-level subjects and one AS-level or O-level subject

We do not grant advanced standing for courses completed under the GCE British curriculum.

NOTE:

- Two AS-level subjects equal one A-level subject.
- Mathematics prerequisites must be at the A-level or AS-level, with minimum grade of C.
- The General Paper cannot be counted as a subject.

INTERNATIONAL BACCALAUREATE (IB)

You must complete your diploma with six subjects, including the program prerequisites, with a minimum score of 29 to 37 points (depending on the program), including at least three Higher Level courses. Additional points for Extended Essay and Theory of Knowledge are counted in your admission average.

If you are completing both the IB diploma and another high school curriculum, we consider both to determine which best positions you for admission.

We might grant you advanced standing for higher-level subjects (depending on your intended program), provided your total score is 5 or higher in each subject.



LANGUAGE REQUIREMENTS

PROGRAMS IN ENGLISH

If you are applying for a program offered in English, you must provide us with your official results in a language test recognized by the University, unless:

- you have completed at least three years of full-time study in an institution where English is the only language of instruction (aside from language courses); and
- the institution is located in a country where English is an official language.

Your official results must be sent directly to us online from the test centre. The institution code required to submit your score is 0993.

REQUIRED ENGLISH LANGUAGE TEST SCORES		
TEST	REQUIRED OVERALL SCORE	REQUIRED SCORE IN WRITTEN SECTION
TOEFL University of Ottawa Institution code: 0993 toefl.org	Internet: 86 Paper-based: Listening: 20 Reading: 20	22 22
University of Ottawa CanTEST cantest.uOttawa.ca	Average of listening and reading: 4.5	4
IELTS ielts.org	6.5	6.5
EPT (MELAB) cambridgemichigan.org/melab	90	85
CAEL cael.ca	70	60
PTE pearsonpte.com	60	60

Note: If you do not meet the English language proficiency level required, the admissions office might make you a conditional offer requiring you to enrol in and pass the English Intensive Program before you can start your program of study. Find out more about improving your English language skills at eip.uOttawa.ca.

PROGRAMS IN FRENCH

If you are applying for a program offered in French, you must provide us with your official results in a language test recognized by the University, unless:

- you have completed at least three years of full-time study in an institution where French is the only language of instruction (aside from language courses); and
- the institution is located in a country where French is an official language.

REQUIRED FRENCH LANGUAGE TEST SCORES	
TEST	REQUIRED SCORE
DALF ciep.fr/en/delf-dalf	C1 or C2
DELF ciep.fr/en/delf-dalf	B2
TEF francais.cci-paris-idf.fr	B2
TCF ciep.fr/en/tcf	B2
TESTCan testcan.uOttawa.ca/en	4



THE UNIVERSITY
OF OTTAWA OFFERS
PROGRAMS TAUGHT
IN **ENGLISH** AND
IN **FRENCH**

All tests must have been taken no more than two years prior to the date you apply to the University of Ottawa. If your results in one of these tests do not meet the required level, you might still be considered for conditional admission with additional language courses.

If you do not meet these requirements but believe you qualify for an exemption, visit uOttawa.ca/undergraduate-admissions/admission-requirements/language-requirements for exemption requirements.

If we consider that a student's knowledge of the chosen language of study is insufficient, regardless of language test scores, we reserve the right to ask the student to write an additional test or to take language courses.

UNDERGRADUATE STUDIES



CREDIT TRANSFERS AND ADVANCED STANDING

If you have already completed some university-level studies at an accredited institution, you might be eligible to enter the first or second year of your undergraduate program with advanced standing. The program and year to which you are admitted depend on the courses you have taken and the grades you have received.

To be considered for advanced standing, you must accept your offer of admission and provide official course descriptions (in English or French) for all studies you have completed outside Canada, with details on course content, sessions and hours of instruction.



ADMISSION DECISION

uOttawa.ca/students

Within two weeks of you submitting your application, the undergraduate admissions office will email you an acknowledgement of receipt. Save it, because it contains instructions on how to access uOttawa's student portal, uoZone.

Use uoZone to:

- View the status of your admission application
- Upload required admission documents using uoDoc
- Check out financial aid options through the Online Scholarships and Bursaries search engine

It can take several weeks to review your file and we don't issue all admission decisions at the same time. If you choose more than one program at the University of Ottawa, prioritize your choices, as you will receive, if admissible, only one offer of admission (preferably to your first choice). For the status of your admission file, check your uoZone account regularly.



APPLYING TO EDUCATION OR LAW

You can apply to a professional program such as in law or education. Visit the following faculty websites for specific admission requirements.

education.uOttawa.ca

commonlaw.uOttawa.ca

droitcivil.uOttawa.ca



INTERNATIONAL MENTOR INSIGHT

WHY DO YOU RECOMMEND THE UNIVERSITY OF OTTAWA?

"As an international student and now an international mentor, I know firsthand the challenges that face new international students who want to integrate into Ottawa and their new university environment. My experience and knowledge allow me to help them adapt to Canadian culture and university life. Plus, the orientation sessions and the mentoring service offered by the International Office are important and helpful resources for new international students."

QING HU

STUDENT MENTOR AT THE INTERNATIONAL MENTORING CENTRE



INTERNATIONAL MENTORING CENTRE

mentorio@uOttawa.ca

Our international mentors are students from around the world who have been studying at the University of Ottawa for at least a year.

The international mentors understand the reality of students who come from abroad. They are here to:

- Help you overcome challenges you could face during your university career
- Answer your questions and help you discover Canadian culture
- Tell you about social activities and special events on and around campus
- Answer questions about university life, learning strategies, housing and more



14 INTERNATIONAL STUDENT MENTORS

DEDICATED TO MAKING YOUR TRANSITION TO CANADA SUCCESSFUL AND FUN

GRADUATE STUDIES



PROGRAMS AND ADMISSION

uOttawa.ca/graduate-studies/programs-admission

Before you apply, be sure that you meet the program requirements, including the language requirements for graduate studies. Then, read all the steps described and gather all the documents required for admission.

When you're ready to apply, go online to the Ontario Universities' Application Centre (OUAC) website, which is the application system used by all universities in the province of Ontario, Canada.

Admission to graduate programs is competitive. Applicants for a master's degree must hold an honours bachelor's degree (or equivalent) in a field related to the program for which they are applying. All PhD applicants must hold a master's degree. Admission is not guaranteed even if you meet all the criteria.

It may take several weeks to review your file, and not all admission decisions are issued at the same time. The timing to receive a reply will vary, depending on the program you applied for and the strength of your application. If you have applied for more than one program at the University of Ottawa, you may receive a decision on one program before receiving a decision on another.

Go online to find out what degree equivalents you require for your program of interest.

Note: It is rare to start your studies mid-program, even if you have completed some program requirements.



THESIS AND RESEARCH SUPERVISOR

uOttawa.ca/graduate-studies/students/theses/supervision

Students admitted to a master's program with thesis or research paper, or to a doctoral program, must have a supervisor to guide them in their research and writing. Find out as soon as possible which professors are good candidates to fulfill this role by following these steps:

STEPS TO FIND A SUPERVISOR

- 1 See the profiles of professors who do research at the University of Ottawa and more at uniweb.uOttawa.ca.
- 2 Read their profiles to learn about their research and theoretical approaches.
- 3 Make the first move: Email a professor to introduce yourself, discuss your research and ensure that he or she is authorized to supervise your thesis. Be sure to make a good impression by writing in a formal tone, even if it is an email. Include information about yourself, such as your areas of interest and their similarity to those of the professor.
- 4 Set up a meeting, by Skype, for example, to get to know each other and show your interest. Have your CV, notes on your project and a list of questions ready. If you are visiting Canada, you can even plan a face-to-face meeting and a campus tour.

Professors are not obligated to take on students if they feel it is not a suitable collaboration or if there is insufficient funding.



SEE THE LIST OF OUR PROFESSORS
AND THEIR RESEARCH

STUDY IN FRENCH AND SAVE ON TUITION!

uOttawa.ca/university-fees/differential-tuition-fee-exemption

International students enrolled full time in a French-language program pay the same tuition fees as Canadian students.

To be eligible for the differential tuition fee exemption you must:

- be admitted to a program of studies offered only in French
- OR
- have a secondary or postsecondary diploma in French attesting to a minimum of two years of study, and
 - for programs that offer compulsory courses in both official languages (English and French), enrol for the compulsory courses offered in French



GRADUATE TUITION FEES

uOttawa.ca/university-fees

MASTER'S	
ARTS	\$27,224 to \$29,272
ENGINEERING — COURSE-BASED PROGRAMS	\$35,624
ENGINEERING — RESEARCH-BASED PROGRAMS	\$27,471 to \$29,272
HEALTH SCIENCES	\$27,471 to \$33,172
SCIENCE	\$27,224
SOCIAL SCIENCES	\$27,471 to \$30,315
TELFER SCHOOL OF MANAGEMENT — MBA <i>Length of program varies from 12 to 28 months</i>	\$33,147 to \$64,038
TELFER SCHOOL OF MANAGEMENT — RESEARCH BASED	\$32,808



LEARN ABOUT SCHOLARSHIPS
FOR GRADUATE PROGRAMS

Figures are based on fees for the 2019–2020 academic year (September to April) and are subject to change. Totals include incidental fees and U-Pass. Full-time graduate students must be enrolled for three terms per academic year.

MASTER'S With differential tuition fee exemption	
ARTS	\$9,122 to \$11,596
ENGINEERING	\$9,878 to \$11,215
HEALTH SCIENCES	\$9,481 to \$10,598
SCIENCE	\$9,122
SOCIAL SCIENCES	\$9,122 to \$9,878
TELFER SCHOOL OF MANAGEMENT — MBA <i>Length of program varies from 12 to 28 months</i>	\$15,178 to \$28,099
TELFER SCHOOL OF MANAGEMENT — RESEARCH BASED	\$9,122 to \$9,877

PHD With the differential tuition fee exemption OR the international doctoral scholarship	
ARTS	\$8,119
ENGINEERING	\$8,814
HEALTH SCIENCES	\$8,429
SCIENCE	\$8,119
SOCIAL SCIENCES	\$8,119
TELFER SCHOOL OF MANAGEMENT <i>Length of programs varies from 12 to 28 months</i>	\$9,122



FIND TUITION FEES FOR
GRADUATE PROGRAMS

GRADUATE STUDIES

**FOR MORE INFORMATION ON GRADUATE STUDIES,
CONTACT THE ACADEMIC UNIT YOU'RE INTERESTED IN.**



Faculty of Arts

Tel.: +1-613-562-5439

Email: artsgrad@uOttawa.ca

Faculty of Engineering

Tel.: +1-613-562-5347

Email: engineering.grad@uOttawa.ca

Faculty of Health Sciences

Tel.: +1-613-562-5853

Email: healthsc@uOttawa.ca

Faculty of Science

Tel.: +1-613-562-5800 ext. 3145

Email: gradsci@uOttawa.ca

Faculty of Social Sciences

Tel.: +1-613-562-5732

Email: scsgrad@uOttawa.ca

Telfer School of Management

Tel.: +1-613-562-5884

Email: graduate@telfer.uOttawa.ca

Faculty of Education

Tel.: +1-613-562-5804

Email: educplus@uOttawa.ca

Faculty of Law

Tel.: +1-613-562-5774

Email: llmphd@uOttawa.ca

Faculty of Medicine

Tel.: +1-613-562-5215

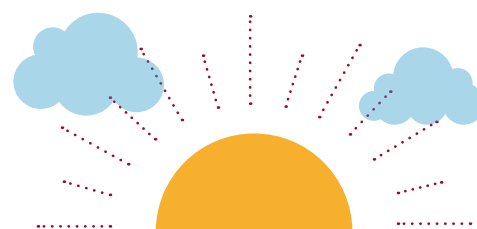
Email: grad.med@uOttawa.ca

DISCOVER YOUR NEW HOME

WE'RE CENTRALLY LOCATED!



SPRING	SUMMER	FALL	WINTER
-3°C TO 17°C	15°C TO 28°C	5°C TO 20°C	-15°C TO 0°C



2,084 HOURS
OF SUNSHINE PER YEAR⁷

MORE THAN TORONTO,
VANCOUVER OR
MONTREAL!

SOURCE

⁷ www.currentresults.com/Weather/Canada/Cities/sunshine-annual-average.php

UNIVERSITY OF OTTAWA CAMPUS



AERIAL VIDEO OF THE CAMPUS

- 1 Tabaret Hall (central administration) and International Office
- 2 University Centre
- 3 Main library (Morisset)
- 4 Advanced Research Complex
- 5 Faculty of Arts
- 6 Faculty of Law



7 Telfer School of Management and Financial Aid and Awards Office

8 Faculty of Education

10 Faculty of Science

R uOttawa residences

9 Faculty of Engineering

11 Faculty of Social Sciences

★ The faculties of Health Sciences and Medicine are located on our Roger Guindon campus, near the Ottawa Hospital General campus.



HAVE A QUESTION? CONTACT US.



UNDERGRADUATE STUDIES

InfoAdmission
Tabaret Hall
75 Laurier Avenue East
Ottawa, Ontario K1N 6N5
CANADA



GRADUATE STUDIES

Get academic unit contact information.

LET'S STAY IN TOUCH! FOLLOW US ON SOCIAL MEDIA



uOttawa – Future students, Futurs étudiants



@uOttawaFuture



@uOttawaFuture