

INTERNATIONAL GUIDE

A university for a
changing world

uos.ac.uk

2017- 2018



**“ THE BEST
WAY TO
PREDICT
THE
FUTURE
IS TO
CREATE IT ”**



Welcome to the University of Suffolk

Richard Lister
Vice-Chancellor

The University of Suffolk is a transformational university, absorbing the best university traditions and aligning them with a twenty first century audience and a modern world of employment and entrepreneurship. We are one of the newest universities in the UK; that means we don't just rely on a heritage stretching back over many years but focus on making history every day. Our growing numbers and high graduate employability demonstrate that we are a real force in the higher education sector.

The University of Suffolk welcomes students from all around the globe. Here you'll be part of a community that always strives to go further and achieve more. Employers are actively involved in course design and delivery, and our emphasis on employability and transferable skills

means our graduates gain good jobs quickly after graduating. Joining forces with employers, businesses, and research organisations, we give them access to the kind of people they are looking for: you.

Gaining the knowledge you need to succeed in your career is just the start. Here you'll receive an exceptional education, richer and more rounded than many, and acquire skills and insights that will always be relevant, no matter how things change further down the road. Wherever you want to go in life, we'll help you get there. We know you're one of a kind and we're here to help you make the most of your time.

In a world where nothing stays the same, we need to change, evolve and succeed. That's what we do. Why not join us and do the same?

OUR HISTORY

History of Higher Education in Suffolk

Higher Education in Suffolk stems back to the Tudor times. Born in Ipswich, Cardinal Wolsey was a powerful man in the 1520s – and was probably the most influential man in England, aside from King Henry VIII.

Wolsey established Cardinal College, Oxford (now Christ Church College) to which he planned to add a number of feeder colleges around England, the main one was to be in Ipswich, his hometown.

The college in Ipswich was to be built upon the site of the Priory of SS Peter and Paul and once the priory

was dissolved there was space and funds available to construct the building of Wolsey's proposed school. Construction of the college started with the famous 'Wolsey's Gate', which still stands to date.

Disagreements between Henry VIII and Wolsey meant that he was removed from his position at the Ipswich College, and parts of his impressive buildings were destroyed and taken to London to form the Palace of Whitehall.

Some 500 years later, Suffolk now has its own University and the legacy of Cardinal Wolsey is firmly rooted within the history of education in Ipswich.

University of Suffolk

The University of Suffolk was originally established as University Campus Suffolk (UCS) in 2007; a collaboration between the Universities of East Anglia and Essex.

The initial discussions began in 2003 when a stakeholder group was formed to investigate the possibility of establishing a university in the county. Until then Suffolk was one of only four counties in England which did not have a University campus. Subsequent funding pledges enabled the creation of the University, and it officially launched on 1 August 2007, welcoming the first cohort of students in September of the same year.

The establishment of UCS in August 2007 transformed the provision of higher education in Suffolk and beyond. Enormous progress has been made in a very short space of time, with many new courses, significant increases in student numbers and an emerging state-of-the-art campus on the Ipswich Waterfront. We also have a Learning Network of partner colleges across Suffolk.

We are determined to continue to build on our success with the announcement of independence and the establishment of the University of Suffolk on 1 August 2016. We are a university for a changing world and will continue to succeed in the face of change, empowering our students to do the same.



3rd

Most affordable
UK university
for international
students*

TOP 10

for Student Support,
Accommodation and
Course and Lecturers***

10 YRS

In 2017 the University
will be celebrating its
10 year anniversary

68

nationalities
represented at
University of Suffolk

94%

Graduates are
in employment
or further
study**

22nd

best university in
the UK****

*according to The Complete University Guide **according to the DLHE
(Destination of Leavers from Higher Education) survey conducted in 2015.
Whatuni Student Choice Awards 2016. *as voted for by students, out of
125 universities in the Whatuni Student Rankings

LOCATION AND CAMPUS



The University is located on the stunning Ipswich Waterfront, which is home to an active restaurant and bar scene, and offers exciting entertainment, from sailing opportunities in the marina to performances at DanceEast. It is a short walk from the town centre and provides easy access to transport links, with the rail station just a 20 minute walk away. The Waterfront is also a hub for many events throughout the year, such as the annual Maritime Festival which plays host to 55,000 visitors all enjoying the best entertainment, food and drink Ipswich has to offer. The University of Suffolk has a Learning Network of partner colleges across Suffolk. See Page 22 for details.



3



2



1. JAMES HEHIR BUILDING

Six storey, £21 million building

Dedicated Biotechnology Unit

Sport and Exercise Science laboratories

i-Lab (innovation laboratory); an inspirational facility for group work, encouraging creative thinking and problem solving

3. WATERFRONT BUILDING

State-of-the-art AV equipment in every teaching room

iMacs in open study areas

Waterfront Gallery showcasing artists from around the world

2. ARTS BUILDING

Dedicated painting, sculpture, drawing and print studios, and installation and video spaces

Specialist film studio and associated editing suites

Industry standard studios, dark rooms and digital suites specific to photography

4. THE ATRIUM

£5.5 million building, opening October 2016

VERT (virtual environment for radiotherapy training) suite

Psychology labs

Computer Games Design suites

Dedicated business hub, Ipswich Waterfront Innovation Centre

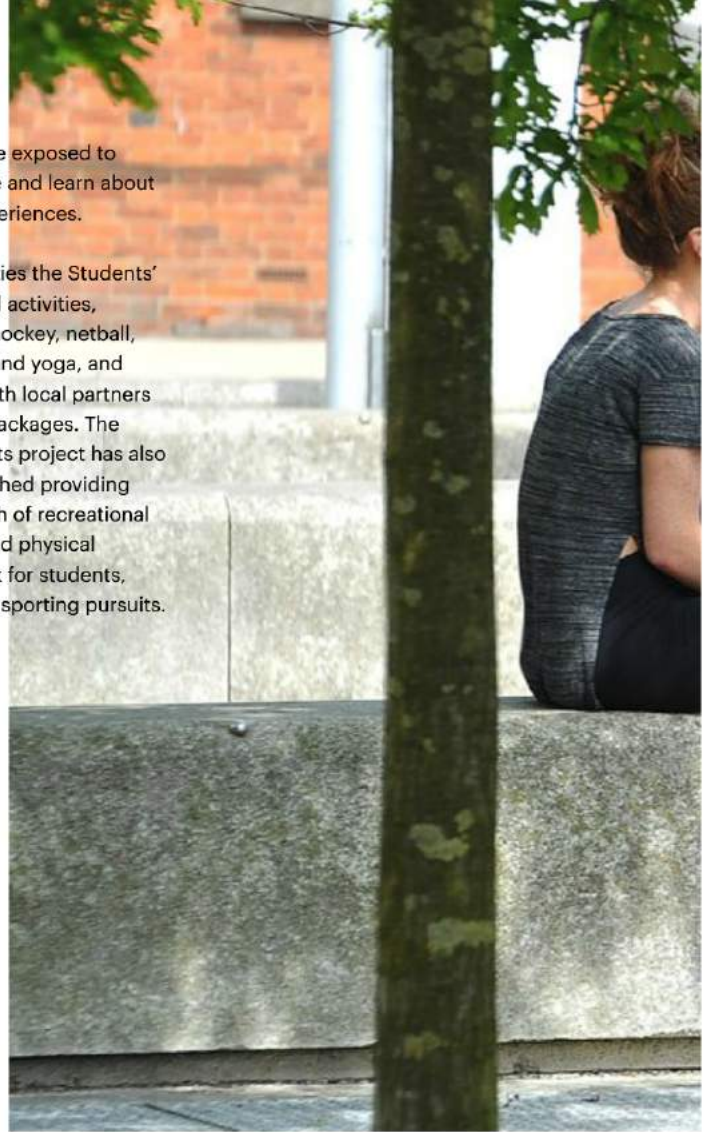
Whatever you want from your university experience, you can find it here

The University of Suffolk is home to students from all over the world. You will be part of a diverse and vibrant student community. Our students are of all ages, cultures and backgrounds, and this variety makes Suffolk an interesting and inspiring place to study.

The Students' Union celebrate culture and diversity through their societies; for example the Afro Caribbean Society (ACS) is a society for all students regardless of their background, providing

an opportunity to be exposed to different ways of life and learn about various cultural experiences.

In addition to societies the Students' Union run clubs and activities, including football, hockey, netball, basketball, Zumba and yoga, and actively engages with local partners to initiate student packages. The Most Active Students project has also recently been launched providing over 20 hours' worth of recreational and social sports and physical activities each week for students, covering a range of sporting pursuits.



STUDENT LIFE



Latitude Festival
Image credit — Victor Frankowski



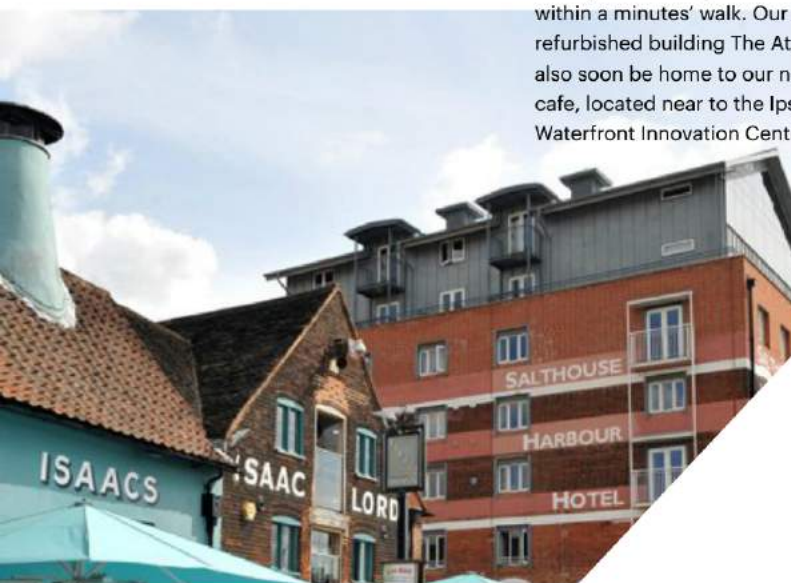
Relax on campus

Across our campus in Ipswich there are cafes to relax, enjoy the scenic views or catch up with friends. In the Waterfront Building, Cargo Coffee offers the chance to enjoy scenic views of the waterfront with a coffee and freshly made cake; or for a more social scene, the student bar Cult Café, located in the James Hehir Building, is the destination of choice. Café Siena in the Arts Building has a selection of homemade food in a relaxing setting, often with the opportunity to admire art on display. Or why not sample some local food and drink by visiting one of the nearby cafes along the waterfront within a minutes' walk. Our recently refurbished building The Atrium will also soon be home to our newest cafe, located near to the Ipswich Waterfront Innovation Centre (IWIC).

Study in one of the UK's upcoming towns

Suffolk is famous for its idyllic countryside and long-stretching coastlines, making it one of the most desirable places to live in the UK. Situated on the beautiful waterfront in the heart of Suffolk, the University of Suffolk offers vast opportunities beyond study. Choose from the Latitude Festival, tobogganing at the Suffolk Ski Centre, or the Sausage and Beer Festival at Jimmy's Farm. Relax and unwind at Southwold Pier or take some time to enjoy the fine Suffolk countryside, a bistro meal along the waterfront or cruise down the River Orwell from just outside our front door.

If you are interested in something a little more cultured, the New Wolsey Theatre and Ipswich Corn Exchange have a variety of performances and gigs: from Aladdin, Carols by Candlelight and Gareth alone's choir, to comedy nights from comedians Jimmy Carr, Jack Whitehall and Frankie Boyle, to name just a few.



ACCOMMODATION



Accommodation



Athena Hall

Live in luxury at Athena Hall in Ipswich. Athena Hall is the University recommended on-campus accommodation located just two minutes from the main Ipswich campus. Home to almost 600 students, Athena Hall is the number one destination for international students. Students can choose from a range of en-suite rooms in cluster flats to luxurious studio apartments, all with modern living facilities and hi-speed Wi-Fi internet.

Benefits

- _____ All bills included
- _____ CCTV and on-site management
- _____ Small double beds
- _____ Social spaces
- _____ On-site laundry facilities
- _____ Close to campus
- _____ Online booking service
- _____ Free contents insurance
- _____ ANUK accredited
- _____ Close to town centre

Indicative accommodation costs based on 2016/17 prices (2017/18 prices have not yet been agreed)

Bronze en-suite

50 weeks £109 / 42 weeks £116

Silver en-suite

50 weeks £115 / 42 weeks £122

Gold en-suite

50 weeks £121 / 42 weeks £128

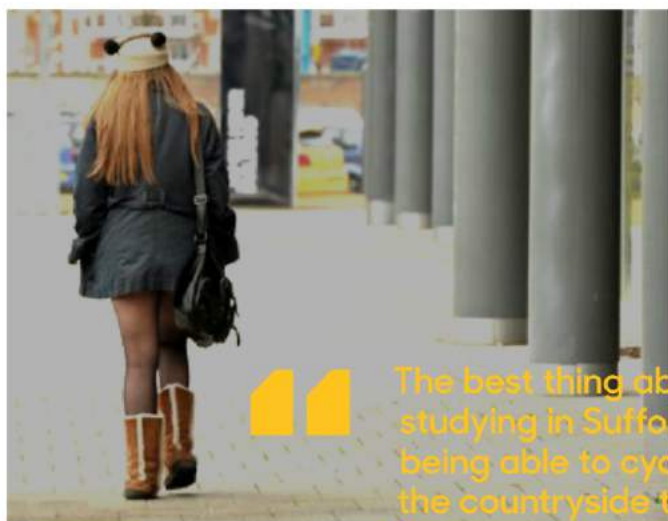
Studio

50 weeks £150 / 42 weeks £157

Living off-campus

Some students prefer to live off-campus for the duration of their studies. Limited rooms are available at a range of 'hall-style' off campus accommodation, as well as rooms in shared houses.

*Students studying at our partner colleges should contact the International Office for advice on accommodation.



“The best thing about studying in Suffolk was being able to cycle through the countryside to a lecture. The countryside on your doorstep helps to clear your mind and focus on your studies.”

Alastair Bartlett, Photography graduate, Class of 2015, now an exhibiting artist



INTERNATIONAL STUDENT SUPPORT

The University of Suffolk has a dedicated International Office made up of colleagues who specialise within international recruitment, admissions and support. The International Office will be with you at every stage of your application, from your initial enquiry to welcoming you to the campus on your first day.

Getting started

To help you settle in, we run an induction programme where you will meet other international students and find out more about living and studying in the UK. This will be a

great opportunity to meet other people and make new friends. You will have full access to our student support services throughout the duration of your course.



The University of Suffolk is ranked as the 3rd most affordable UK University for international students*

*According to The Complete University Guide



Mentor Scheme

Any new student coming to the University of Suffolk can apply to have an experienced student 'mentor' them in their first month here. The mentor will help you settle in, answer your questions and give information about the University, your course, and life in Ipswich.

Disability Support

Students have different experiences and needs and we aim to create an environment which is accessible for all students. If you have a disability, specific learning difference, long-term medical condition or are experiencing mental health difficulties please talk to a member of the Disability and Wellbeing Team about your individual requirements before you start your course or at any point throughout your studies.

Financial Support

More information on the financial support available can be found on page 26.

Health and Wellbeing

We want you to make the most of your time here, to enjoy yourself and keep safe and well. Information is available about how to register with a local doctor, as well as how to access local sexual health and wellbeing services.

Additional Learning and English Language Support

Additional support is also provided for students with any specific learning difficulties. There is also support for those studying with English as a second language.

Careers and Employability Service

Our careers guidance service provides you with the information and advice you need before, during and after your time at Suffolk. Career Fairs are held every year showcasing future career paths and offering opportunities to network with graduate employers. Our professional Careers Advisers offer tailored support in all aspects of career planning.

Chaplaincy

We are a multi-faith community, welcoming students from a diverse range of backgrounds. There is a multi-faith chaplaincy welcoming both staff and students of all faiths and no faith.

Counselling

Independent, impartial and professional counselling is available to all students. This support is confidential, enabling you to discuss any problems you may have. Counselling can also offer help with exam anxiety, depression, stress, relationship problems and emotional issues.



FACULTY OF ARTS, BUSINESS AND APPLIED SOCIAL SCIENCE

The Faculty of Arts, Business and Applied Social Science has four Departments: Arts and Humanities; Suffolk Business School; Children, Young People and Education; and Psychology, Sociology and Social Work. Within our Departments we have academic teams, passionate about their subject discipline, working in state-of-the-art facilities across our Waterfront campus.

Research within the Faculty is pioneering and directed at finding real life solutions to contemporary social problems. As a Faculty we are proud to offer courses that place student satisfaction at the centre of our endeavours. We aim to create an environment that provides a full and rich education and promotes an excellent rate of successful employability for graduating students. Courses within the Faculty have consistently achieved high levels of student satisfaction, and many also rank highly in The Guardian League Tables.

We have established excellent working relationships with a range of local, national and international

organisations and our students have gone on to work in a broad spectrum of careers, across a variety of sectors, including local government, BBC Worldwide, The Houses of Parliament, Metro Imaging, PlayStation Magazine and Willis.

Students leave the University of Suffolk, or go on to study at postgraduate level, equipped with an informed 'world view' and a critical awareness of their place within it, prepared with the skills and knowledge required to engage confidently in a fluid and challenging commercial world. We work to empower students to become actively involved in their wider communities, enabling them to respond to a changing world and make a positive difference to it, as active, informed citizens.

Pro-Vice-Chancellor
Professor Simon Hallsworth



Department of Arts and Humanities

- BA (Hons) Digital Film Production
- BA (Hons) English
- BA (Hons) Fine Art
- BA (Hons) Graphic Design
- BA (Hons) Graphic Design (Graphic Illustration)
- BA (Hons) History
- BA (Hons) Interior Architecture and Design
- BA (Hons) Photography
- BA (Hons) Screenwriting and Film Studies
- BA (Hons) Screenwriting
- MA Fine Art

Suffolk Business School

- BA (Hons) Accounting and Financial Management
- BA (Hons) Business Management
- BSc (Hons) Business Management and Information Technology
- BA (Hons) Event Management
- BA (Hons) Event and Tourism Management
- BA (Hons) Tourism Management
- Master of Business Administration (MBA)
- MSc Business and Management

Department of Children, Young People and Education

- BA (Hons) Early Childhood Studies
- BA (Hons) Early Childhood Studies and Psychology
- BA (Hons) Early Childhood Studies and Youth Studies
- BA (Hons) Special Educational Needs and Disability Studies
- MA Childhood Studies
- (PGCE) Professional/ Postgraduate Certificate in Education

Department of Psychology, Sociology and Social Work

- BSc (Hons) Criminology
- BSc (Hons) Criminology and Law
- BSc (Hons) Criminology and Sociology
- BSc (Hons) Criminology and Youth Studies
- LLB (Hons) Law with Criminology
- LLB (Hons) Law with Sociology
- BSc (Hons) Psychology and Criminology
- BSc (Hons) Psychology and Early Childhood Studies
- BSc (Hons) Psychology and Sociology
- BSc (Hons) Psychology and Youth Studies
- BSc (Hons) Sociology
- BA (Hons) Sociology and Youth Studies



If you want something you have never had, you must be willing to do something you have never done.

Thomas Jefferson

FEATURED COURSES

BA (Hons) Interior Architecture and Design

"The creation of environments and atmospheres has become the focus of contemporary architecture and design and a very important factor of our life and well-being. The degree is an innovative programme, uniquely designed to bring together creative people from different backgrounds and skills, who are interested in conceptually driven space and place making. The course is taught in allocated studios by accredited professionals who specialise in architecture, design, fine art, and critical theory, and presents studies on the practice of design, artistic and philosophical endeavour, technology,

sustainability, and new media. The degree offers early engagement in industry-led projects and an array of graduate career opportunities in architectural and interior design, installation art, curation, and the public sector. Our alumni become fully prepared for industry and postgraduate study, employed with a complete and professionally presented portfolio of work."

Dr Liana Psarologaki, Senior Lecturer
Department of Arts and Humanities



BA (Hons) Early Childhood Studies

The academic study of Early Years and Education at the University of Suffolk will enhance your understanding of the breadth of ideas and theories associated with the care, learning and development of children and young people. Relevant to everyone, and rarely out of the media, this is a fascinating and broad area of study where you will consider educational, health,

welfare, psychological, sociological, legal, philosophical, political and economic perspectives with the support of our experienced academic teams. As one of the longest-standing degree programmes in the UK, students on the BA (Hons) Early Childhood Studies at the University of Suffolk are taught by experienced and research active academics.



MSc
**BUSINESS AND
MANAGEMENT**

Modern businesses have become more diverse. The balance of power has shifted significantly in favour of the customer, who now has more control of the relationship than ever before, and technology has brought in new media channels and cultural norms. The role of business and management has altered, so too has the scope and role of management which is changing in response. The MSc Business and Management goes beyond just providing students with a thorough grounding in vital business and management practices

and the contexts in which they operate. The course philosophy focuses upon the role of modern business and management and the varied and sometimes complex mixture of knowledge and skills that drive the revenue streams of those modern entities.

Areas of study include: Global Enterprise Management, International Marketing, Operations and Human Resource Management and Entrepreneurship.

MBA
**MASTER OF BUSINESS
ADMINISTRATION**

Accredited by 

MBA students have the opportunity to take part in an international consultancy project which is delivered in partnership with Suffolk University in the United States of America. This unique aspect of the course allows students to develop their global outlook on business and management, and compliments other UK based management field trips. Areas of study include finance and risk management, global economics, strategic marketing and

international business strategy. "One of the benefits of the MBA at the University of Suffolk is that students graduate with their MBA qualification, along with formal accreditation with the Chartered Management Institute (CMI) and the associated Level 7 Diploma."

Dr Tom Vine, Senior Lecturer
Suffolk Business School

BSc (Hons)
Psychology
(and associated routes)

Accredited by 

Contemporary Psychology is a scientific discipline dealing with human behaviour, cognition and action. Studying Psychology at the University of Suffolk you will explore and examine the interaction between mind and behaviour, the nature of the unconscious, the functioning of memory, and individual behaviour in social situations, prejudice

and altruism. Psychology at the University of Suffolk main campus in Ipswich is accredited by the British Psychological Society (BPS) and students who wish to become professional psychologists are eligible for Graduate Basis of Chartered Membership.

FACULTY OF HEALTH AND SCIENCE



The Faculty of Health and Science has three Departments: Health Studies; Nursing Studies; and Science and Technology. The Faculty has a modern and exciting approach to education that inspires new learning; virtual learning, simulation, laboratory work, podcasts and social networking have been extensively developed, to aid and support a blended approach to education.

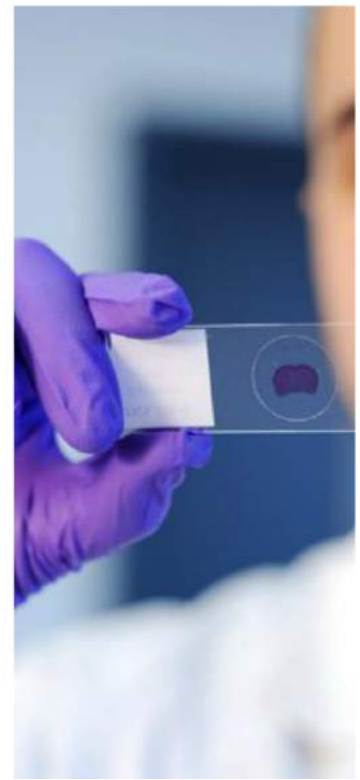
Work-based learning is an integral aspect of all of the programmes that the Faculty offers. This is supported by the use of state-of-the-art Clinical Skills Centre, and Sports, Exercise and Biotech Laboratories in the purpose-built James Hehir Building—resources which are invaluable for learning, assessment and research. The Faculty works in close collaboration with key business partners and organisations, such as the local health service organisations, and our education commissioners Health Education England, to ensure all programmes are fit for purpose and of the highest quality. In all our professional programmes mentors support our students in placement. Upon completion, 99% of those who had studied pre-registration health

courses went on to gain employment in healthcare. Health graduates can work in a variety of settings; public, private, voluntary and overseas, though most of our graduates choose to begin their career within the NHS.

Science and Technology graduates have gone on to work in a variety of fields. Computer Games Design graduate Nicola Mizon, who graduated in 2013, now works for Aeria Games as a Project Manager in Berlin. In 2014, two computer games design graduates, Joseph Kinglake and Luke Botham, secured roles at a Sony Computer Entertainment studio, Guerilla Games, in the Netherlands following a work placement with the company.

Key areas of research within the Faculty focus on biotechnology, dementia and ageing, inter-professional learning, pressure ulcer prevention, learning technology, student achievement, assessment methodologies and smart systems.

Pro-Vice-Chancellor
Professor Penny Cavenagh



Department of Health Studies

BSc (Hons) Diagnostic
Radiography

BSc (Hons) Paramedic Science

BSc (Hons) Radiotherapy and
Oncology

**Department of Nursing
Studies**

BSc (Hons) Adult Nursing

BSc (Hons) Child Health
Nursing

BSc (Hons) Mental Health
Nursing

Places for international
students on courses within the
Departments of Health Studies
and Nursing Studies vary year by
year. Please contact the University
before making an application.

**Department of Science and
Technology**

BSc (Hons) Bioscience

BSc (Hons) Bioscience with
Foundation Year

BA (Hons) Computer Games
Design

BSc (Hons) Computer Games
Programming

BSc (Hons) Mobile and Web
Engineering

BSc (Hons) Nutrition and
Human Health

BSc (Hons) Nutrition and
Human Health with Foundation
Year

BSc (Hons) Sport and Exercise
Science

MSci Football Coaching

MSci Performance Analysis for
Football

MSci Sports Performance
Analysis for Football

MSci Sports Psychology for
Football

MSci Strength and
Conditioning for Football

MSc Regenerative Medicine



Life does not get
better by chance, it
gets better by change.

Jim Rohn

FEATURED COURSES

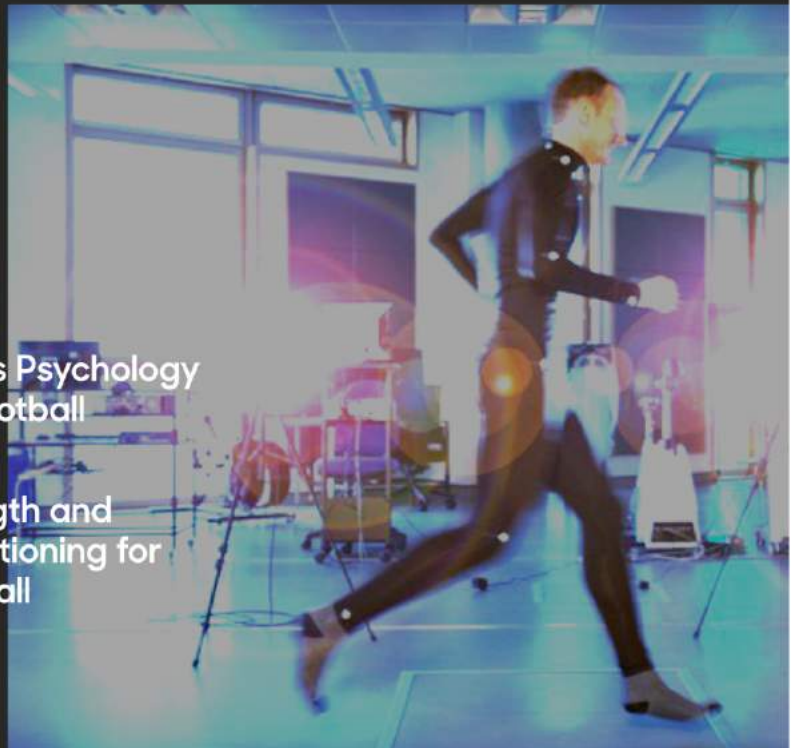
MSci
Football Coaching

MSci
**Performance
Analysis for Football**

MSci
**Sports Performance
Physiology for
Football**

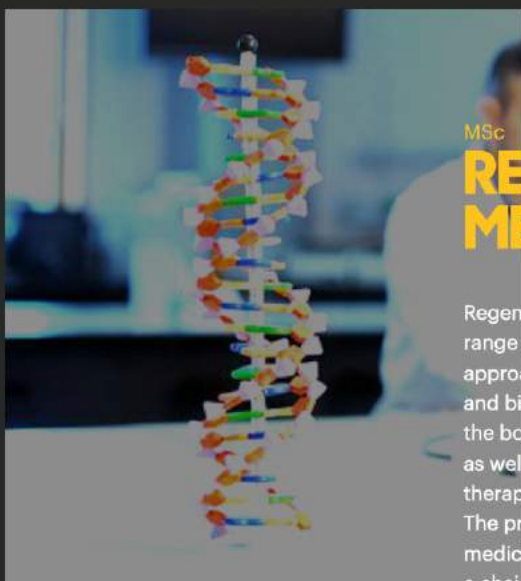
MSci
**Sports Psychology
for Football**

MSci
**Strength and
Conditioning for
Football**



These four-year Integrated Master degrees combine undergraduate and postgraduate study into a single degree. Students are exposed to the elite football working environment, supported with theoretical knowledge and research-based learning. This formal partnership between the University

of Suffolk and Ipswich Town Football Club Academy will develop sport science and coaching practice in football, through a programme of world-leading research and applied practice. Students will be part of the exciting and unique collaboration, as members of our academic, research and training team.



MSc

REGENERATIVE MEDICINE

Regenerative Medicine includes a range of pharmaceutical related approaches, where small molecules and biologicals are used to stimulate the body's innate repair systems, as well as the use of cell based therapies, and bioactive scaffolds. The production of these new medicines and devices involves a chain of important stages in development, including laboratory based invention, preclinical testing, navigation of intellectual property

issues and compliance with a range of regulatory requirements. It is a vibrant area of endeavour involving multidisciplinary interactions and strong employment opportunities for those trained in the field.

Postgraduate students at the University of Suffolk have access to multi-million pound, state-of-the-art biotechnology laboratories upon the supervision of highly experienced and research active scientists.

BSc (Hons)

Diagnostic Radiography

BSc (Hons)

Radiography and Oncology

Radiography students benefit from spending 60% of their time in a professional work placement. Graduates are eligible to apply for registration with the Health and Care Professions Council (HCPC) which is a requirement for employment in a broad range of NHS and private sector radiographic roles.

"Radiography is a diverse and challenging area of practice, comprising two distinct professions. Diagnostic radiographers produce high quality images using X-Rays and other modalities for the diagnosis of a range of injuries and health conditions. Therapeutic

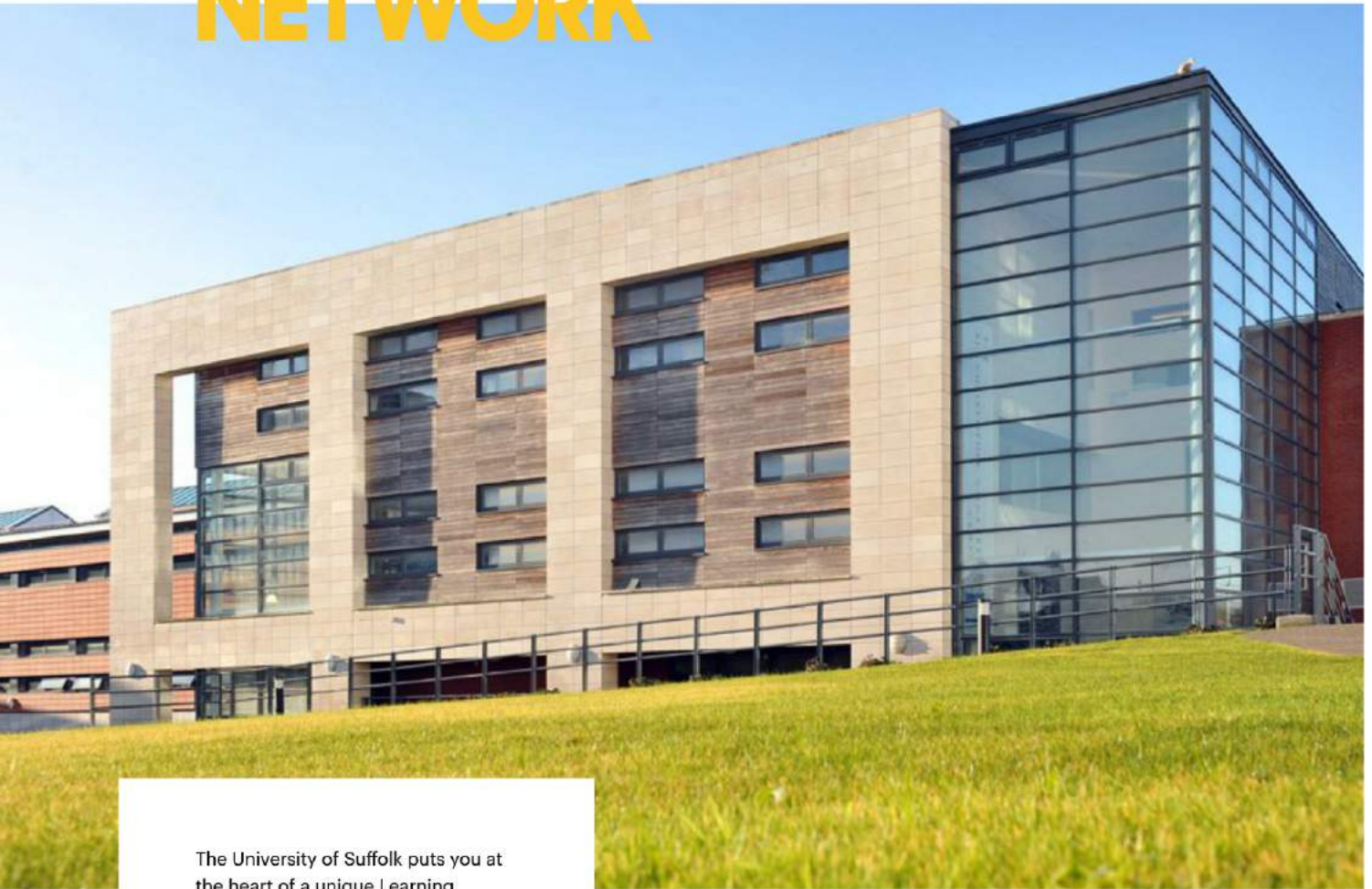
radiographers use high energy X-Rays, precisely targeting tumours to treat patients who have a cancer diagnosis. Both professions are intellectually stimulating and require high standards of patient care. Radiographers are in high demand globally as populations are ageing, cancer rates are increasing, technologies are developing and research is enabling us to support patients to live longer and healthier lives."

Caroline Doolan

Senior Lecturer and Course Leader,
Department of Health Studies



LEARNING NETWORK



The University of Suffolk puts you at the heart of a unique Learning Network. In addition to our main campus in Ipswich we have partner colleges located across Suffolk and Great Yarmouth that are focused on accessibility, community, enterprise and innovation. Students can find new ways to engage, interact and learn.

Our Learning Network provides accessible higher education for students in the region and beyond, providing a range of higher education qualifications, including Honours and Foundation degrees, which have been developed in partnership with local business.

Our Learning Network attracts students from further afield who are either interested in the unique range of courses offered or the environments in which our partner colleges are based.



Education is the most powerful weapon which you can use to change the world

Nelson Mandela



**University of Suffolk at Great
Yarmouth College**

- BSc (Hons) progression route /
FdSc Applied Computing
- BA (Hons) progression route
Arts Practice
- FdA Commercial Arts Practice
- FdA Early Years Practice
- FdA Fashion and Textiles
- BA (Hons) Person-Centred
Counselling
- BA (Hons) Photographic and
Digital Media
- BA (Hons) progression route
Professional Studies
- FdA Social Care Practice
- FdSc Sport, Health and
Exercise
- FdA Visual Media Production
- FdSc Wildlife Conservation &
Animal Management*
- HNC / HND General
Engineering
- HND Mechanical Engineering
- FdA Business Management

**University of Suffolk at
Lowestoft College**

- BA (Hons) progression route /
FdA Children's Care, Learning
and Development
- BA (Hons) Design
- BA (Hons) progression route
Inclusive Practice and
Integrated Working
- BEng (Hons) progression route
/ FdSc / HNC Operations
Engineering
- BA (Hons) Social Science
- FdA Supporting Inclusive
Learning and Practice

**University of Suffolk at West
Suffolk College**

- FdSc Accounting and Financial
Management*
- BA (Hons) Applied Interior
Design
- BA (Hons) Applied Psychology
and Applied Sociology
- BA (Hons) Applied Sociology
and Law
- BA (Hons) Applied Sociology
and Religious Studies
- FdA Business Management
- BA (Hons) Business
Management
- BA (Hons) Business
Management and Applied
Psychology
- BA (Hons) Business
Management and Law
- BA (Hons) progression route
Children's Care, Learning and
Development
- BSc (Hons) Computer Games
Technology*
- BSc (Hons) progression
route / FdSc Construction
Management
- BA (Hons) progression route /
FdA Counselling
- BA (Hons) Early Childhood
Studies
- FdA Early Years Practice
- BEng (Hons) progression
route / FdEng Engineering
(Electrical, Electronic,
Mechanical)
- BA (Hons) English and Applied
Psychology
- BA (Hons) English and History
- BA (Hons) Graphic and
Communication Design
- BA (Hons) History and Applied
Sociology

- BA (Hons) History and Ethics
- BA (Hons) History and Law
- BA (Hons) History and
Religious Studies
- FdA Hospitality and Event
Management
- BSc (Hons) Information
Technology Service
Management*
- BA (Hons) Law and Ethics
- HNC Mechanical Engineering
- BA (Hons) progression route /
FdA Music Production
- BA (Hons) progression route
Professional Studies
- BA (Hons) Religious Studies
and Ethics
- BSc (Hons) Software
Development*
- FdSc Sports Coaching and
Development



*subject to validation

POSTGRADUATE RESEARCH DEGREES

We offer a unique environment where you are highly valued, make an impact and are not lost amongst a sea of others. As a postgraduate research student you will receive high-quality supervisory support from academic staff with international reputations for their own research and teaching.

We are able to offer MPhil and PhD research degrees in a range of subject disciplines:

Computer Science and Informatics

Health and Biological Sciences

History

Social Policy (including Business Management, Education, Heritage and Social Work)

Sport and Exercise Science

You will be supervised and will conduct your work at the University of Suffolk, but will be registered with the University of East Anglia (UEA), will follow their regulations and will be awarded with a degree from UEA on successful completion. This partnership ensures that you are able to access high-quality supervision at the University of Suffolk and take advantage of the specialist areas of research on offer here, while also benefiting from association with one of the UK's best research intensive universities.

Application deadlines

October entry - 31 May

January entry - 31 August



Our researcher development programme is highly developed and will equip PhD students for careers in and beyond academia

All PhD students will receive their degrees from UEA and have access to both the UEA and University of Suffolk research environments.

We are the only provider of PhDs within Suffolk and have been doing so since 2011.



The Graduate School support for PhD students was recently commended at the five year review of provision*

*Conducted by the University of Essex and the University of East Anglia.

THE GRADUATE SCHOOL

Our Graduate School was formed to support the recruitment, student experience and skills development of all our postgraduate research students.

During your time at the University Suffolk, the Graduate School will be your first point of call for questions regarding the administration of your degree.

We provide dedicated study and social spaces for research students, as well as access to specialist

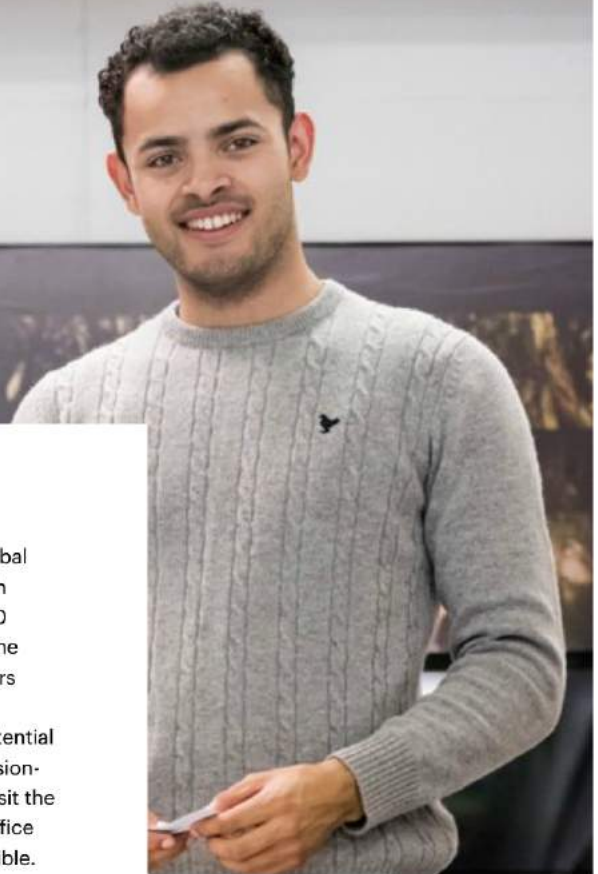
equipment where required. Some workshops and events provided by the Graduate School are also available to postgraduate taught degree students.

For more information about studying for a research degree, please contact the Graduate School graduateschool@uos.ac.uk

uos.ac.uk/postgraduate



TUITION FEES AND SCHOLARSHIPS



Tuition fees

Overseas tuition fees for 2017/18 academic year:

Undergraduate

Classroom based - £10,080
 Lab-based - £11,580
 Placement fee - £3,000*

Postgraduate Taught

Classroom based - £10,080
 Lab-based - £11,580
 MBA - £14,490**

Scholarships

Early Payment Scholarship

An early payment scholarship of £500 is offered to all full-time undergraduate and postgraduate international students who pay their yearly tuition fee in full by 30 September (for autumn intake) or 26 February (for spring intake) of the year of study.

Country Scholarships

The University of Suffolk offers scholarships for students from a number of countries. Visit your country page on the website to find out what scholarships you may be eligible for.

Chevening Scholarships

This is the UK government's global scholarships programme, which supports students from over 110 different countries to study in the UK, typically on one year Masters programmes. Scholarships are offered to students with the potential to become future leaders, decision-makers and opinion formers. Visit the Foreign and Commonwealth Office webpages to see if you are eligible.

Commonwealth Scholarships

The Commonwealth Scholarship Commission (CSC) in the UK offers around 700 awards annually, mostly for students from developing countries to study in the UK. Awards are funded by the UK government in conjunction with UK Universities.

* Any international students accepted on a course that requires a practice placement with an NHS-commissioned service, for example Nursing, Midwifery or Radiography, will pay an additional £3000 fee per each year of study (this excludes all British Islands students except the Falkland Islands).

** This fee includes a live international consultancy project in Boston, USA covering flights, transfers, accommodation and tuition. Students who are unable to obtain a visa to travel to the United States of America will be able to undertake an alternative assessment based within the UK.





VISA AND IMMIGRATION

If you are from a country which is outside of the EEA and Switzerland and would like to study in the UK you will be required to apply for a Tier 4 (General) student visa from the UK Government.

When we have the relevant documents we'll send you the CAS and guidance for making your visa application. You'll need to contact us when you've received your visa and let us know when you'll be arriving at the University.

How to get a Visa

Once you've met the conditions of your offer (including English Language) we'll get in touch to make arrangements for your Confirmation of Acceptance of Studies (CAS). The CAS can then be used to apply for a Tier 4 (General) student visa.

You'll need to provide:

A certified copy of your passport and all previous visas

Evidence of your qualifications including translations if requested

Bank statements demonstrating you have sufficient funds

£3,000 CAS deposit

Money matters

To get a Tier 4 General student visa, you will need to show that you have enough money in your account to cover the full cost of your course, including one year's full course fee and maintenance costs. For example, you will need to show that you have the course fee plus £9,135 as living expenses in your account for nine months.

For a full list of course fees please visit uos.ac.uk





APPLYING AND ENTRY REQUIREMENTS

Applying

Undergraduate

Individuals wishing to study full-time undergraduate courses should apply online through UCAS (Universities and Colleges Admissions Service) at www.ucas.com

Using the UCAS system offers the benefit of a centralised application form for up to five choices, as well as an easy to use online application with additional instructions and guidance to make it as easy as possible for all prospective students to apply.

Make sure you check with your chosen university about application deadlines for specific courses. If you are applying through an approved Agent of the University of Suffolk, applications can be made directly to us at no charge, speak to your Agent for more details.

For a full list of Agents visit the international pages on our website uos.ac.uk/international

Postgraduate Taught Degrees

Applications for postgraduate taught study can be made throughout the year using the University of Suffolk online application form available uos.ac.uk/apply. We typically interview our applicants for postgraduate study and will contact applicants directly to arrange this.

After you've applied

Once you have made your application we will send you confirmation that we have received your details. We will review your application and if we need any more details we will get in touch. We will confirm our decision as soon as possible; if you have applied via UCAS we will upload it to

UCAS Track, or if you have applied directly to the University; we will send you a letter and an email.

Art, Design & Media

Before we make a decision we will ask you to send us an electronic portfolio and invite you to a short informal Skype or telephone interview so that the Admissions Tutor can make sure the course is the right choice for you.

Professional Health

If you meet the academic entry requirements we will get in touch to arrange a Skype or telephone interview with the Admissions Tutor. If you are successful at interview you will need to provide contact details for your local school or college so we can arrange for you to take our literacy and numeracy tests.

Entry requirements

The University of Suffolk uses entry requirements to select students who have the potential to succeed. Completing a degree helps people to get ahead in their careers and we welcome applications from anyone who we believe would benefit from studying with us.

Before making your application we recommend that you check the requirements for your chosen course. If you don't think you meet them, or you have any questions, get in touch with us and we'd be happy to talk about your options.

Your Country

We list entry requirements by country on our website at uos.ac.uk/international, which is where you'll be able to see the academic requirements for undergraduate and postgraduate study. If you can't find your country contact international@uos.ac.uk for more information.

Some courses will have non-academic conditions, such as work experience, access to practice or occupational health assessments; we recommend checking individual course pages for these.

English Language

For some people English may be a second language therefore UK Visa and Immigration (UKVI) require specific English Language qualifications at a minimum level for visa purposes.

The UKVI define their requirements under the Common European Framework of Reference for Languages (CEFR) for undergraduate and postgraduate study.

Undergraduate

IELTS (academic) 6.0 overall with a minimum of 5.5 in all components

Undergraduate Professional Health courses

IELTS (academic) 7.0 overall with a minimum of 5.5 in all components

Postgraduate

IELTS (academic): 6.5 or 7.0 overall depending on your choice of course with a minimum 5.5 in all components).

Password Skills Test

The University of Suffolk also offers the Password Skills Test at a cost of £40. This test meets UKVI requirements and can be completed at the University, by Skype or at your Agents office. Contact international@uos.ac.uk for details of this test.



Things don't have to
change the world to
be important

— Steve Jobs

STUDY ABROAD

In an ever competitive world, graduates need to stand out from the crowd. At the University of Suffolk, our students have the opportunity to enrich their academic experience by studying abroad for a semester or an entire academic year in a number of exciting and diverse locations.

Why choose to study abroad?

Head start in the job market

New perspectives

International networks

Life-changing experiences

The University of Suffolk has formal exchange arrangements with universities around the world and is part of Erasmus+, the European Commission-funded Erasmus programme.

uos.ac.uk/erasmus



This opportunity allowed me to explore new cultures, make new friends and I also got to see how Radiography is practiced in another country.

Bethaney—Turku University of Applied Sciences, Finland

All courses

Edith Cowan University, Australia

Suffolk Business School

University of Eastern Finland, Finland

University of Artois, France

University of Flensburg, Germany

InHolland University, Netherlands

University of Granada, Spain

BSc (Hons) Diagnostic Radiography/ BSc (Hons) Radiotherapy and Oncology

University of Applied Sciences, Wien, Austria

Hogeschool Universiteit Brussel, Belgium

University of Lillebealt, Denmark

University of Applied Sciences, Finland

UCD School of Medicine and Medical Science, Ireland

University of Malta, Malta

Fontys University of Applied Sciences, Netherlands

InHolland, University of Applied Sciences, Netherlands

Bergen University College, Norway

Instituto Politecnico de Coimbra, Portugal

Politecnico do Porto, Portugal

University of Ljubljana, Slovenia

Lund University, Sweden

Jönköping University, Sweden

BA (Hons) History

University of Artois, France

BA (Hons) Photography

Vytautas Magnus University, Lithuania

BA (Hons) Fine Art

Vilnius Academy of Arts, Lithuania

OPEN EVENTS AND VISITS

If you would like to join the University of Suffolk, you should visit us at one of the education events that we attend around the world. Visit our website to see if there is an event near you or contact us so we can arrange to meet you via Skype – international@uos.ac.uk

Alternatively you can attend one of our open events where you will get to find out more about the University, meet the academic teams, and see the campus and local area.

Saturday 1 Oct 2016

10.30am - 2.30pm

Saturday 5 Nov 2016

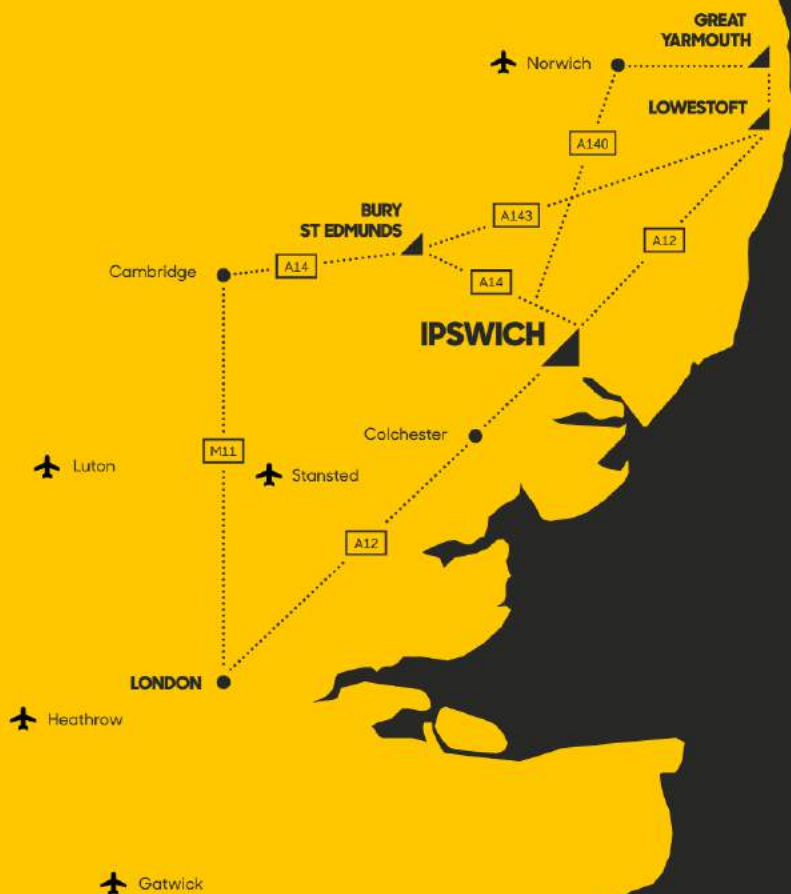
10.30am - 2.30pm

Saturday 22 Apr 2017

10.30am - 2.30pm

Saturday 8 Jul 2017

10.30am - 2.30pm



For further details and additional dates visit uos.ac.uk/openevents

